

# CUES PARTS CATALOG - CUTTERS

v06.2022

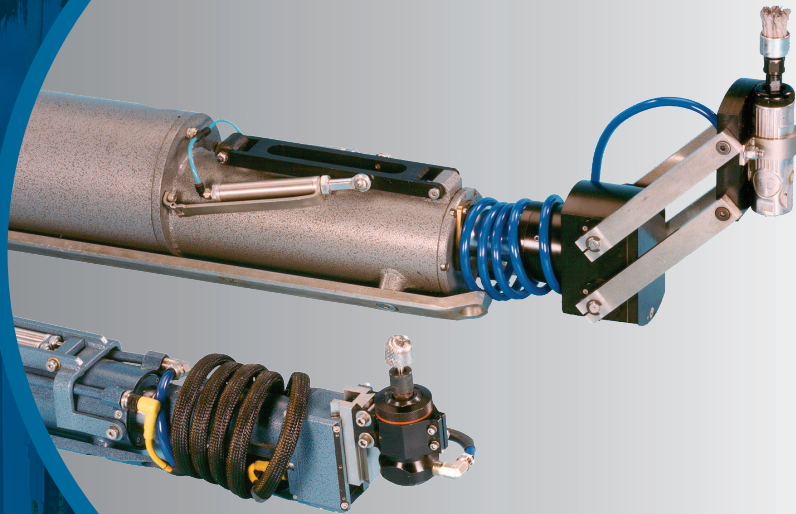




FIGURE 1A: ASSEMBLY CUTTER, GIANT KANGAROO, GK400

FOR ASSEMBLY/SET-UP INSTRUCTIONS AND PROCEDURES, PLEASE REFER TO THE KANGAROO CUTTER USER MANUAL, P/N 960971

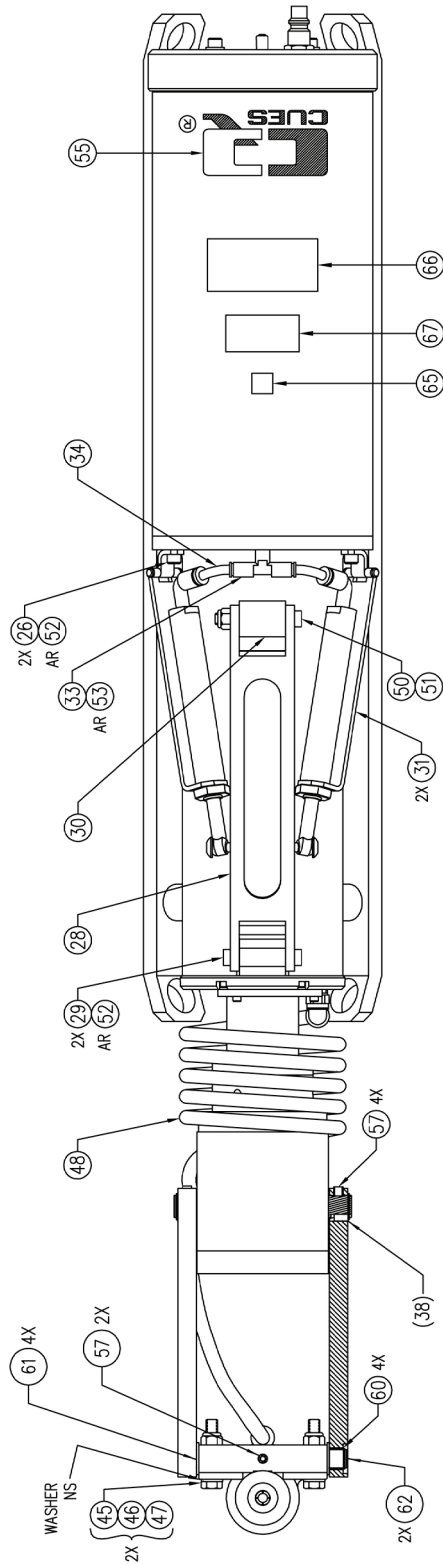
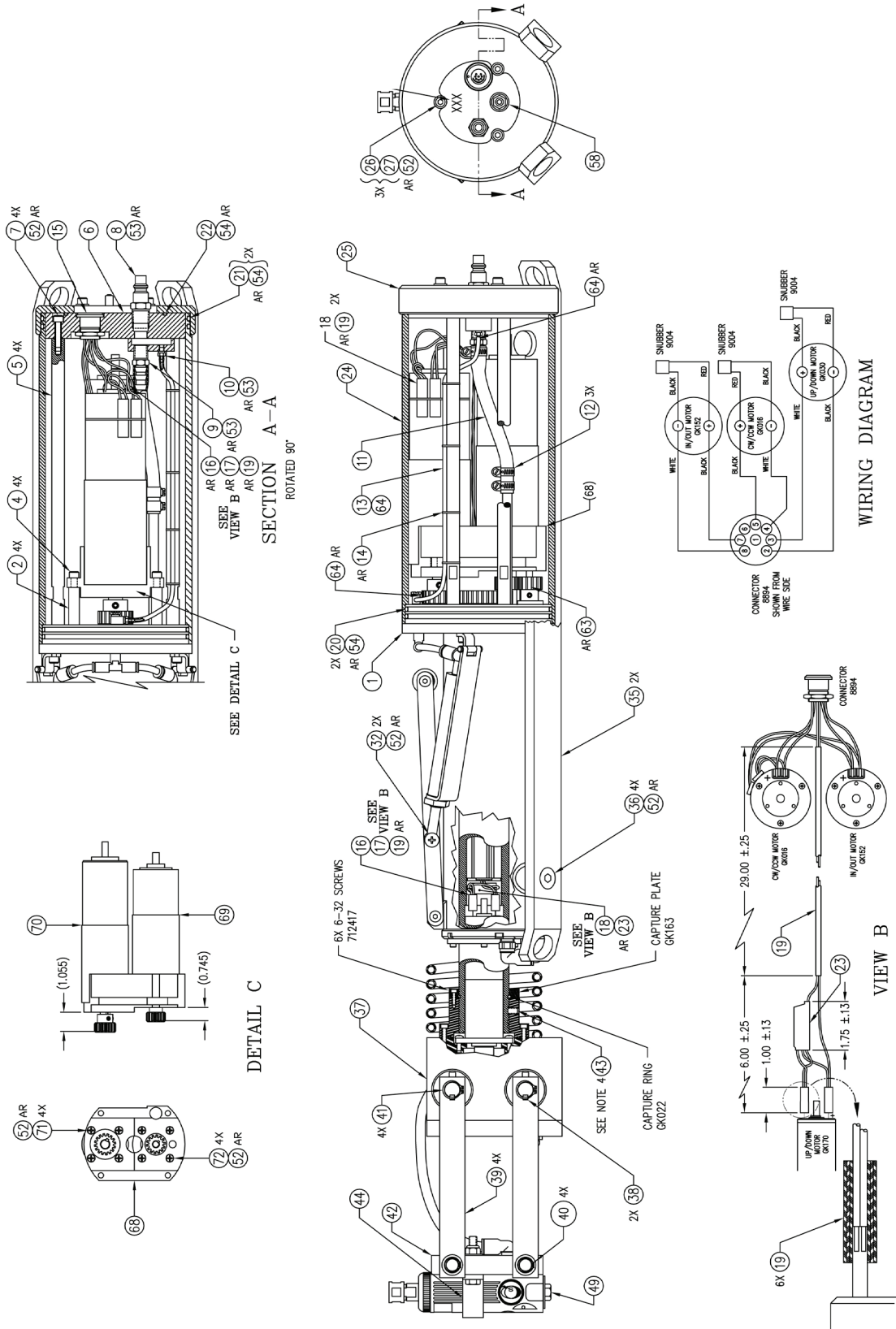


FIGURE 1B: ASSEMBLY CUTTER, GIANT KANGAROO, GK400



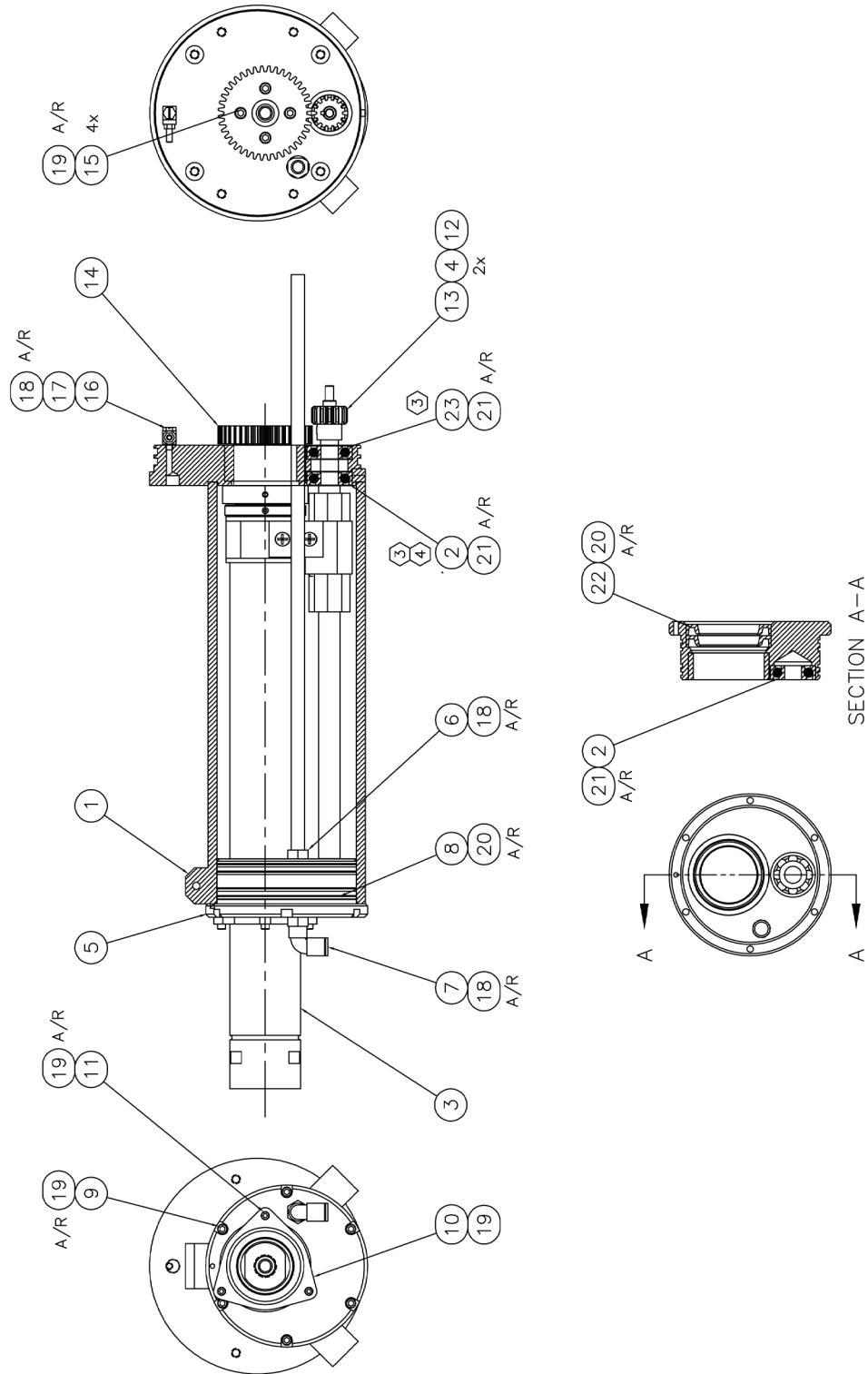


**Assembly Cutter, Giant Kangaroo (See Fig. 1) Rev. K, P/N GK400**

Item #	Description	P/N	Qty
0001	HOUSING ASSY,LINEAR DRIVE	GK110	1
0002	STANDOFF,MOTOR MOUNT	GK048	4
0004	SCREW,CAP,SKT HD,1/4-20X3/4,SST	101022	4
0005	STANDOFF,HOUSING MOUNT	GK049	4
0006	PLATE,END,MANIFOLD	GK045	1
0007	SCREW,CAP,SKT HD,1/4-20X1,SST	101065	4
0008	FITTING,BRASS,AIR,3/8"NPT	220492	1
0009	PUSHLOCK,BRASS 3/8HX1/4MPT	114322	1
0010	FITTING,BARBED	8824	1
0011	HOSE,RUBBER,3/8ID,250 LB	010030	1
0012	CLAMP,WORM SCR,SST,#6 .312WIDE 5/8	120602	3
0013	TUBING,BLACK FLEXIBLE	8804	1
0014	MRO-TIE,CABLE,7",CLEAR	440309	1
0015	RECEPTACLE,8-PIN,ELECTRIC CONNECTOR	8894	1
0016	WIRE,#20 BLACK STRANDED 600V	713317	3
0017	WIRE,#20 WHITE TEFLON 19 STRANDED	161646	3
0018	SNUBBER,ASSY,F/CUTTER	9004	3
0019	TUBE,SHRINK,BLACK 3/16"RNF	712577	1
0020	O-RING,2-254 BUNA	HW799	2
0021	O-RING,2-255 BUNA	HW800	2
0022	O-RING,2-154 BUNA	HW801	1
0023	TUBE,SHRINK,BLACK 3/8"RNF	712586	1
0024	REAR TUBE,GIANT CUTTER	GK042	1
0025	PLATE,END,CAP	GK044	1
0026	SCREW,CAP,SKT HD,1/4-20X5/8,SST	101024	5
0027	WASHER,FLAT,1/4"SST	101736	3
0028	LEVEL,BRAKE	GK050	1
0029	SCREW,SHLDR,(.313)	8807	2
0030	PAD,BRAKE	GK066	1
0031	AIR CYLINDER/HINGE ASSY	GK058	2
0032	SCREW,TRUSS,1/4-20X3/4 PHIL SST	712449	2
0033	FITTING,TEE,QUICK DISCONNECT,5/32	HW791	1
0034	TUBING,PLASTIC BLACK 5/32"	220683	1
0035	SKID,GIANT KANGAROO	GK057	2
0036	SCREW,FLAT,SKT HD,7/16-20X.75 SST	HW763	4
0037	CUTTER HEAD ASSY,GCUTTER,NEW	GK414	1
0038	KEY,3/16 SQR X .350 LG	GK177	2
0039	ARM,ELEVATOR,GK,NEW	GK173	4
0040	RING,RETAINING EXTERNAL 1/2"	097501	4

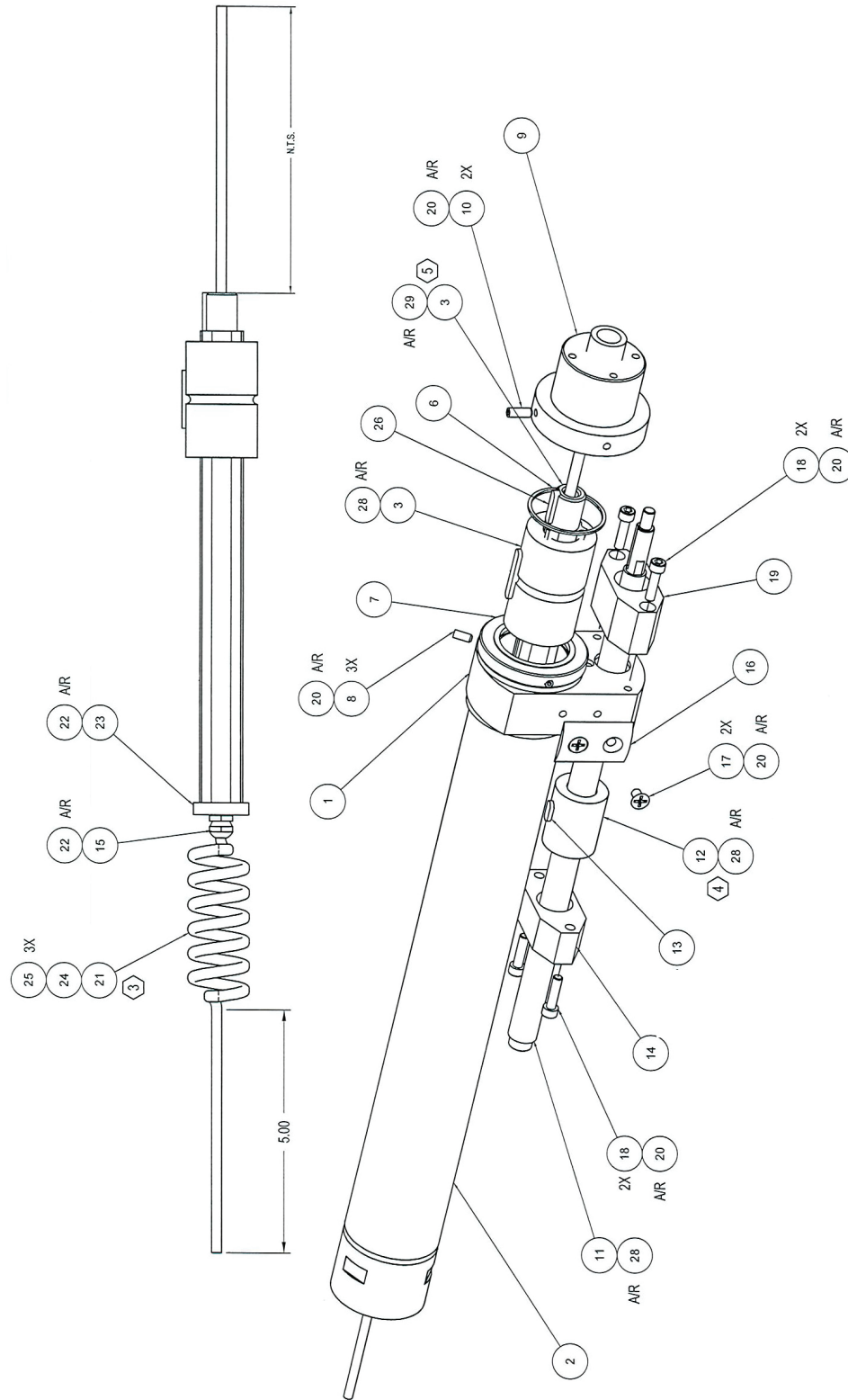
Assembly Cutter, Giant Kangaroo (See Fig. 1) Rev. K, P/N GK400			
Item #	Description	P/N	Qty
0041	RING,RETAINING,EXTERNAL,5/8"	097510	4
0042	PLATE,MOUNT,AIR,MOTOR,GK,NEW	GK172	1
0043	SCREW,SET,1/4-20X3/8 NYLOCK	101050	3
0044	CLAMP,AIR MOTOR,DIA 1.610	GK036	1
0045	BOLT,HEX,5/16-18X1 3/4 GR5	101108	2
0046	WASHER,FLAT,5/16 SST	101741	2
0047	NUT,LOCK NYLON INSERT 5/16-18PLATED	101143	2
0048	HOSE,COILED	8931	5.84
0049	AIR MOTOR,ASSEMBLY	GK101	1
0050	SCREW,SHLDR,SKT HD,5/16X1 1/2 LG	100508	1
0051	NUT,LOCK W/NYL INS 1/4-20 SST	HW030	1
0052	MRO-REMOVABLE LCK,ND 121200-50,BLUE	440061	1
0053	MRO-SEAL.HGH PRESS,ND 440400-50,BRN	445091	1
0054	MRO-LUBRICANT,O-RING 2 OZ TUBE	439986	1
0055	LABEL,CUES,2X4"	962036	1
0056	MRO-PERMANENT LOCK,ND 140500-50,RED	440060	1
0057	SCREW,SET,1/4-20X1/4 STL	100998	4
0058	VALVE,PURGE,P&T	CP063	1
0060	BEARING,DU,1/2X3/8,#08DU06	HW439	4
0061	BEARING,THRUST,DU,1/2ID,#G06DU	HW440	4
0062	SHAFT,MOUNT PLATE,GK,NEW	GK171	2
0063	MRO-GREASE,HEAVY DUTY REDMAN	440030	1
0064	MRO-ADHES.INSTANT,ND 310035-28,CLR	440094	1
0065	LABEL,LASERTAB MARKER, .560 X .560	CS222	1
0066	LABEL,THERMAL XFR,3.00"W X 2.00"H	CS223	1
0067	LABEL,ETL MARK,2" X 1"	CS224	1
0068	MOUNT,MOTOR,GK	GK047	1
0069	MOTOR ASSY,IN/OUT,GK, 6-30-04&NEWER	GK402	1
0070	MOTOR ASSY,ROTATIONAL,GK,NEW	GK403	1
0071	SCREW,METRIC,FLAT,PHIL,M5X20MM,SS	HW944	4
0072	SCREW,METRIC,FLAT,PHIL,M5X25MM,SS	HW943	4

FIGURE 2: HOUSING ASSEMBLY, LINEAR DRIVE, GK110



Housing Assembly, Linear Drive (See Fig. 2) Rev. F, P/N GK110			
Item #	Description	P/N	Qty
1	Housing,Linear,Gk	GK041	1
2	Bearing,Anglr Cntct,12mm Idx32mm Od	HW1274	2
3	Linear Drive Assy,Giant Cutter	GK109	1
4	Keystock,3/32x.5 Long	8872	1
5	Front Plate,Linear Housing	GK043	1
6	Air Tube Assy	GK122	1
7	Fitting,Swivel,Male,90deg.1/4npt	HW430	1
8	O-Ring,2-044 Buna	HW802	4
9	Screw,Cap,Skt Hd,8-32x1/2,W/Nylo,Ss	101620	6
10	Plate,Retaining,Front Seal	GK046	1
11	Screw,Cap,Skt Hd,6-32x3/8,W/Nylo,Ss	101621	3
12	Screw,Set,10-32x1/8 Sst	101027	2
13	Gear,In/Out,Modified,Gk	GK149	1
14	Gear,Driven,Rotational,Gk,New	GK155	1
15	Screw,Cap,Skt Hd,10-32x3/4,Sst	100121	4
16	Fitting,Swivel	8823	1
17	Fitting,Barbed	8824	1
18	Mro-Seal.Hgh Press,Nd 440400-50,Brn	445091	1
19	Mro-Removable Lck,Nd 121200-50,Blue	440061	1
20	Mro-Lubricant,O-Ring 2 Oz Tube	439986	1
21	Mro-Superlube,3 Oz	HW039	1
22	Seal,Oil	GK121	2
23	Bearing,Ball,12mmx32mmx10mm Thk,Opn	HW1275	1

FIGURE 3: LINEAR DRIVE ASSY, GIANT CUTTER, GK109

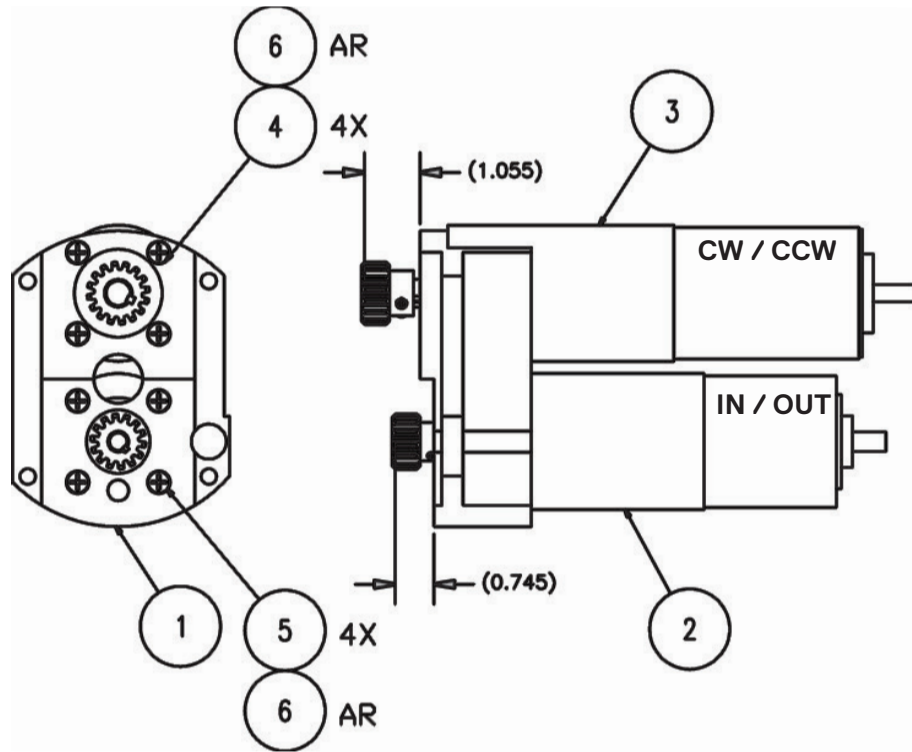




**Linear Drive Assy, Giant Cutter (See Fig. 3) Rev. J, GK109**

Item #	Description	P/N	Qty
0001	CARRIAGE,ASSY,CUTTER	GK111	1
0002	SHAFT,LINER ROTATIONAL	GK019	1
0003	SHAFT ASSY,NUT,KEY LINEAR,DRIVE,KEY	GK190	1
0006	RING,RETAINING,N5000-145	HW789	1
0007	COLLAR,LINER DRIVE	GK054	1
0008	SCREW,SET,8-32X3/8 SST	HW198	3
0009	MOUNT,GEAR,DRIVEN,ROTATE,KEY	GK191	1
0010	SCREW,SET,10-32X1/2 SST	103042	2
0011	LEADSCREW,MODIFIED,GK	GK154	1
0012	NUT,BALL SCREW,16X5	HW787	1
0013	KEY,NUT,BALL SCREW	GK131	1
0014	PLATE,RETAINING,BALL SCREW NUT	GK132	1
0015	STRAIN RELIEF,LIQUID TIGHT,10MM	HW1349	1
0016	PLATE,GUIDE	GK067	1
0017	SCREW,FLATHEAD,10-32X5/16 PHIL SST	101426	2
0018	SCREW,CAP,SKT HD,10-32X3/4,SST	100121	4
0019	STOP,REAR,CARRIAGE,GK,NEW	GK157	1
0020	MRO-REMOVABLE LCK,ND 121200-50,BLUE	440061	1
0021	WIRE,#20 BLACK STRANDED 600V	713317	1
0022	MRO-PERMANENT LOCK,ND 140500-50,RED	440060	1
0023	STOP WASHER,BALL SPLINE,GK,NEW	GK156	1
0024	WIRE,#20 WHITE BU	713326	1
0025	TUBE,SHRINK,BLACK 3/16"RNF	712577	3
0026	KEY,6MMX6MMX20MM ROUND END 316 SST	HW2915	1
0028	MRO-GREASE,LITHIUM,ARTIC CAT	CS218	1
0029	MRO-RET.COMP,.015GP,ND541200-50,GRN	CS092	1

FIGURE 4. MOTOR MOUNT ASSEMBLY, GK401



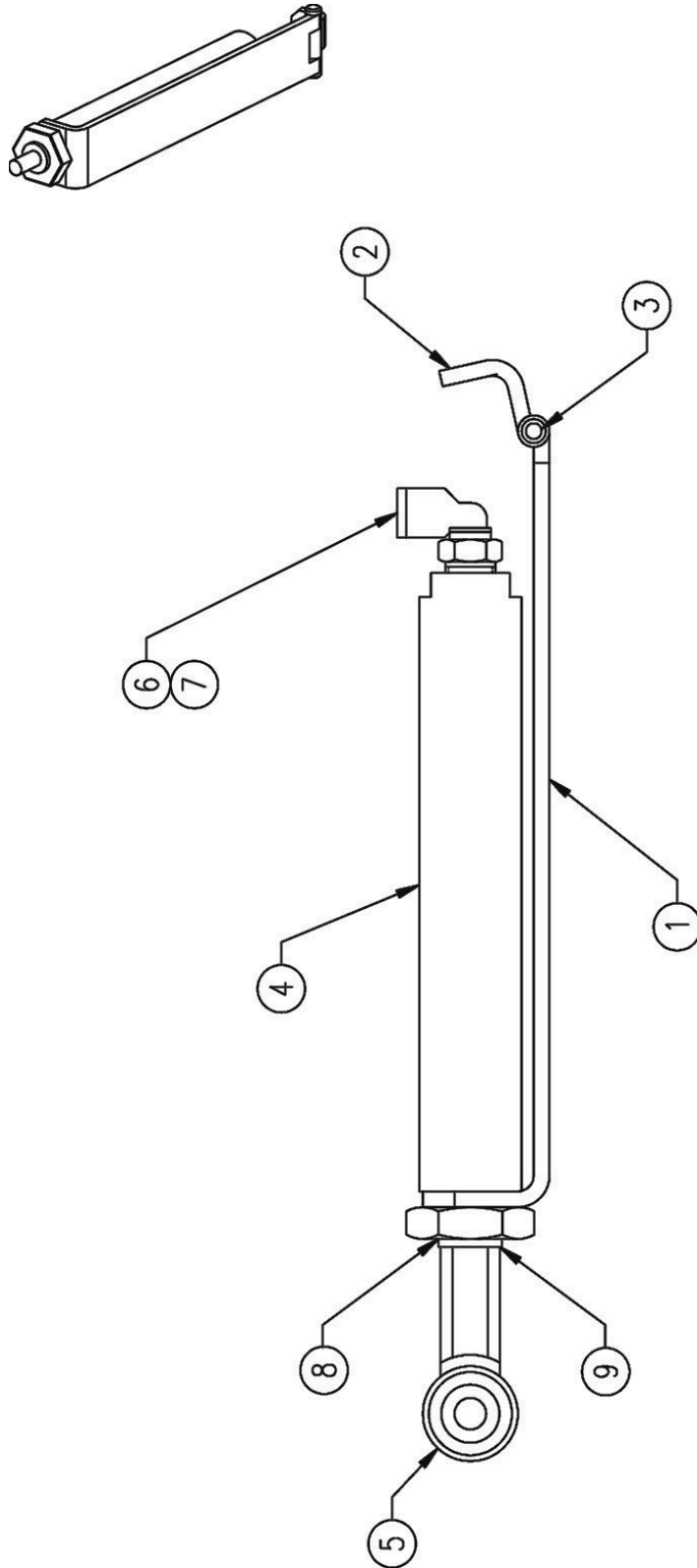
**Motor Mount Assy, Giant Cutter (See Fig. 4) Rev. A, GK401**

Item #	Description	P/N	Qty
-1	Mount, Motor, Gk	GK047	1
-2	Motor Assy, In/Out, Gk, New	GK402	1
-3	Motor Assy, Rotational, Gk, New	GK403	1
-4	Screw, Metric, Flat, Phil, M5x20mm, SS	HW944	4
-5	Screw, Metric, Flat, Phil, M5x25mm,SS	HW943	4
-6	MRO-Perma MM-115-035 Threadlock BI	440061	1

EL312 - L & R + In & Out Motor

\* EL312 is the replacement "motor only" for the GK402 and GK403 Assemblies

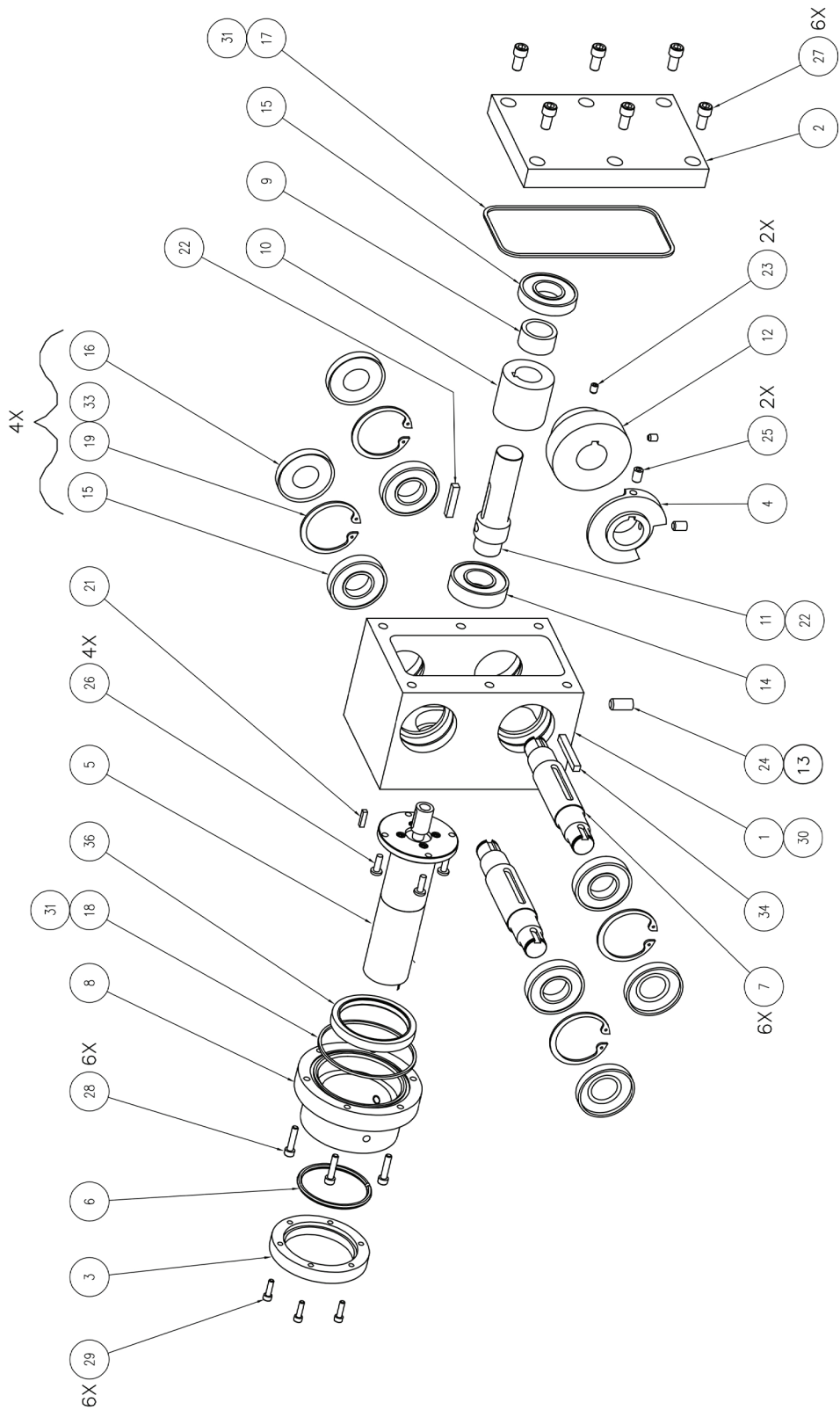
FIGURE 5. AIR CYLINDER/HINGE ASSEMBLY, GK058



Air Cylinder/Hinge Assembly (See Fig. 5) Rev. A, GK058

Item #	Description	P/N	Qty
-1	· Hinge Bar, Air Cylinder, Brake	GK053	2
-2	· Hinge Plate, Air Cylinder, Brake	GK052	2
-3	· Pin, Spring, 1/8 X 1 Carbon Steel	097548	2
-4	· Air Cylinder, G.Cutter	GK117	2
-5	· Ball Joint, Air Cylinder	GK118	2
-6	· Elbow, 90 Degree, Quick Disconnect	HW806	2
-7	· MRO-Loctite 545 Hydraulic	445091	2
-8	· MRO-Loctite 242 Med Blue MM-115-042	440061	2

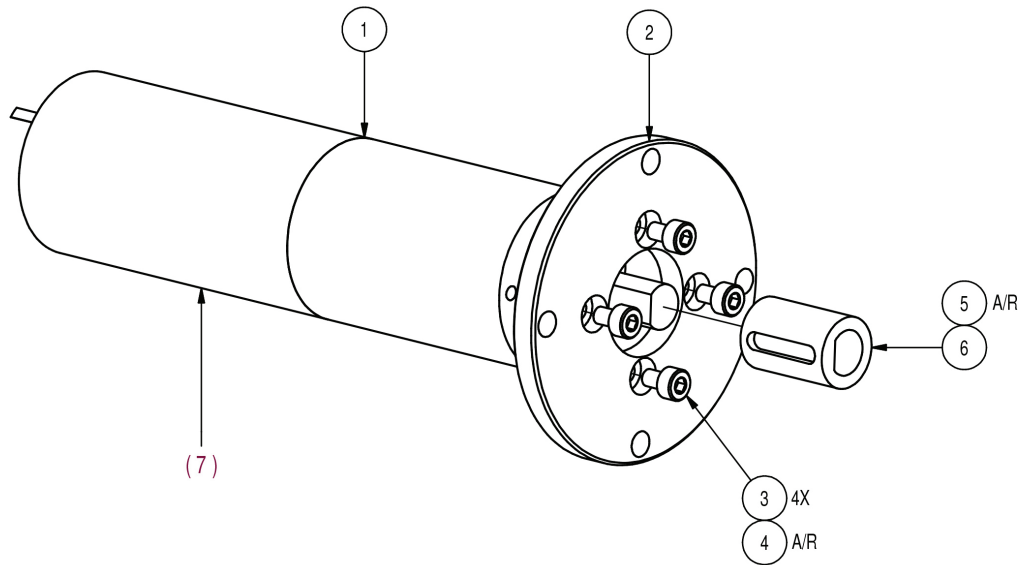
FIGURE 6. CUTTER HEAD ASSEMBLY, GIANT CUTTER, GK414



Cutter Head Assy, Giant Cutter (See Fig. 6) Rev. K, GK414			
Item #	Description	P/N	Qty
0001	HOUSING,CUTTER,HEAD,GK,NEW	GK161	1
0002	COVER,PLATE,HOUSING,GK,NEW	GK164	1
0003	PLATE,CAPTURE,GK,NEW	GK163	1
0004	STOP,ROTATION,GK,NEW	GK167	1
0005	MOTOR ASSY,UP/DN,913:1,GK,MAXON	GK362	1
0006	RETAINING RING,CUTTER HEAD	GK022	1
0007	SHAFT,LIFT,GK	GK165	2
0008	NECK,HOUSING,GEAR,GK,NEW	GK169	1
0009	SPACER,WORM,GK	GK166	1
0010	WORM,QUAD,10DP	HW433	1
0011	SHAFT,DRIVE,WORM,GK,NEW	GK168	1
0012	GEAR,WORM,20T,10DB,KEYED	GK178	1
0013	MRO-WICKING,ND 150012-50,GREEN	440082	1
0014	BEARING,BALL,3/4X1-5/8X7/16	HW437	1
0015	BEARING,BALL,3/4X1-5/8X5/16	HW442	5
0016	SEAL,SINGLE LIP,1-5/8X3/4X1/4	HW441	4
0017	O-RING,BUNA,2-046	HW435	1
0018	O-RING,EP 2-038	130141	1
0019	RING,INTERNAL,N5000-162	HW436	4
0020	MRO-LUBRICANT,O-RING 2 OZ TUBE	439986	1
0021	KEYSTOCK,1/8"SQ X1/2LG,ZINC PLATED	8874	1
0022	KEY,SQUARE,3/16X1"LG	TM658	1
0023	SCREW,SET,10-32X1/4 SST	101000	2
0024	SCREW,SET,5/16-18X5/8 STEEL	101100	1
0025	SCREW,SET,1/4-20X3/8 KNURL PLATED	101052	2
0026	SCREW,PAN,8-32X1/2 PHIL SST	712876	4
0027	SCREW,CAP,SKT HD,1/4-20X1/2,SST	101001	6
0028	SCREW,CAP,SKT HD,#8-32 X 3/4 SST	HW809	6
0029	SCREW,CAP,SKT HD,6-32X1/2,SST	712417	6
0030	MRO-GREASE,HEAVY DUTY REDMAN	440030	1
0031	MRO-SUPERLUBE,3 OZ	HW039	1
0032	MRO-REMOVABLE LCK,ND 121200-50,BLUE	440061	1
0033	MRO-SEAL.HGH PRESS,ND 440400-50,BRN	445091	1
0034	KEY,3/16 SQR X 1.50LG	GK176	1
0036	SEAL,OIL	GK121	1



FIGURE 7. MOTOR ASSY,UP/DN,913:1,GK,MAXON, GK362

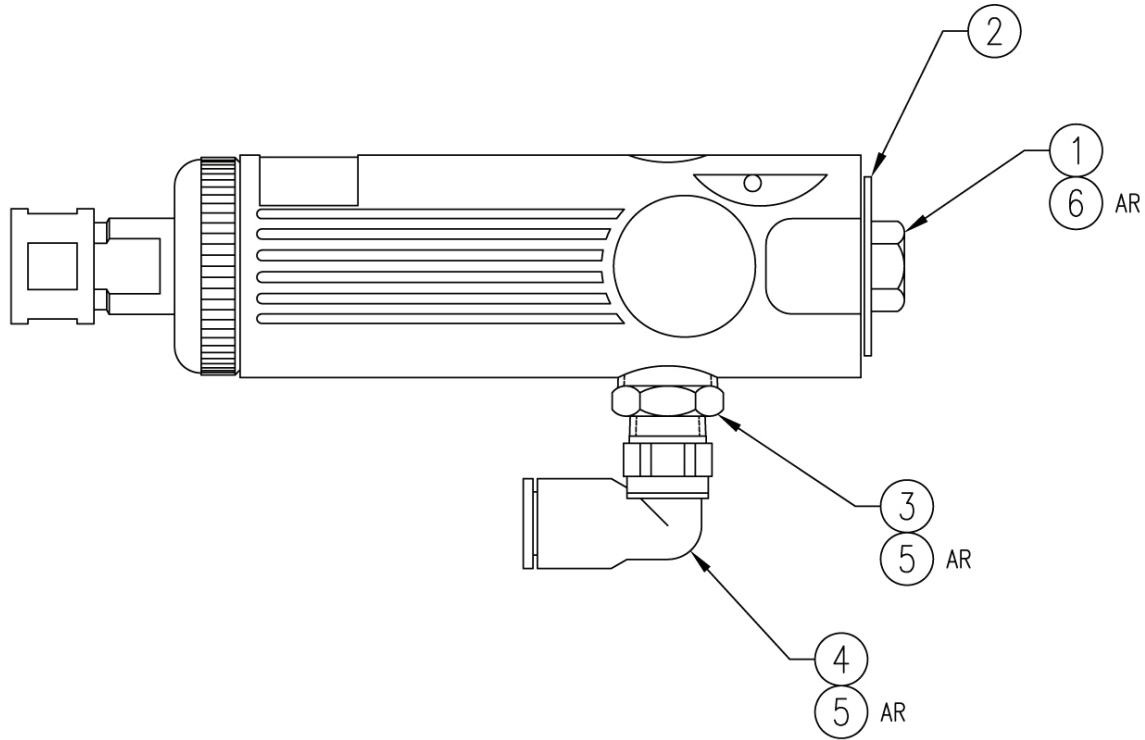


MOTOR ASSY,UP/DN,913:1,GK,MAXON (See Fig. 7) Rev. B, GK362			
Item #	Description	P/N	Qty
0001	GEARMOTOR,913:1,MAXON F/GK362,MOD	GK187-1	1
0002	PLATE,MICROMO TO MAXON Ø8MM MOTOR	GK186	1
0003	SCREW,SHCS,M3 X 5MM LG,SST	HW460	4
0004	MRO-REMOVABLE LCK,ND 121200-50,BLUE	440061	1
0005	MRO-RET.COMP,.015GP,ND541200-50,GRN	CS092	1
0006	ADAPTER,MOTOR SHAFT,GK187/GK362	GK188	1

NOTE:

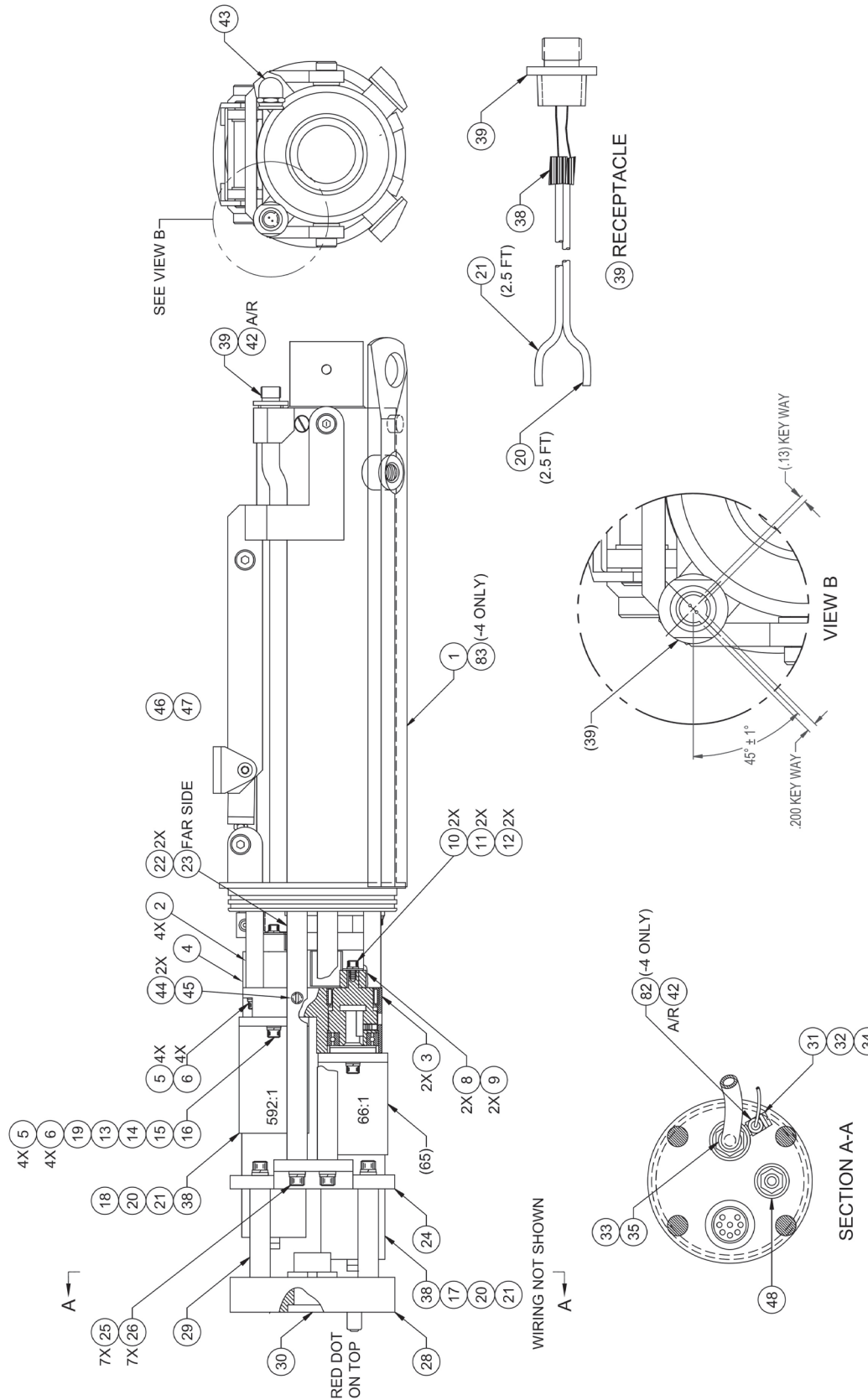
GK187-1 is the replacement motor/gearbox assembly for the GK362 Assembly  
 EC2011 is the replacement motor only

FIGURE 8. AIR MOTOR ASSEMBLY, GK101



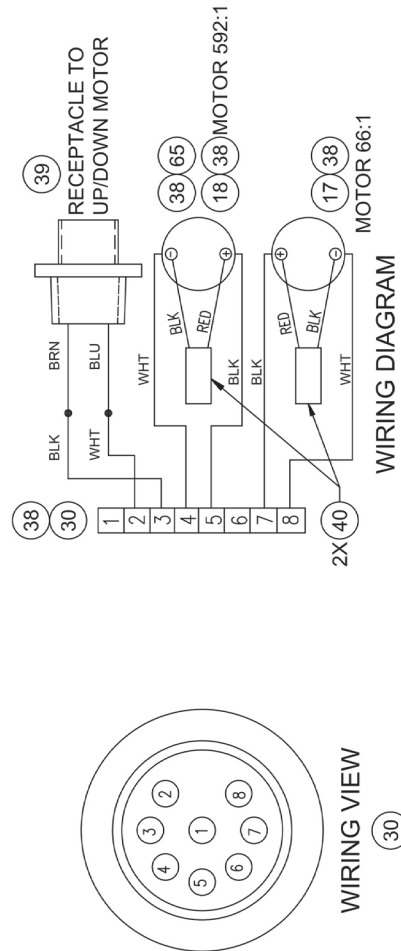
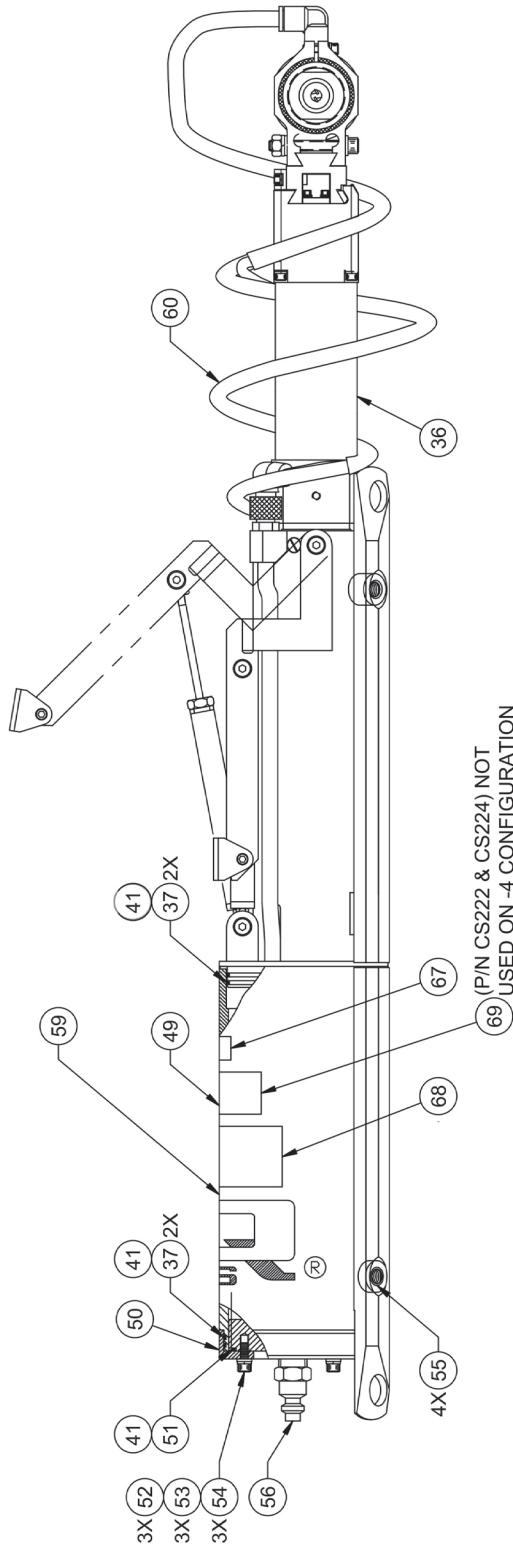
Air Motor Assembly (See Fig. 8) Rev. C, GK101			
Item #	Description	P/N	Qty
0001	BOLT,HEX,3/8-16X1 1/4 GR5 PL	101206	1
0002	WASHER,FENDER,MODIFIED	GK105	1
0003	BUSHING,3/8X1/4 RDC SST SCH40 T-304	113121	1
0004	FITTING,SWIVEL,MALE,90DEG.1/4NPT	HW430	1
0005	MRO-SEAL.HGH PRESS,ND 440400-50,BRN	445091	1
0006	MRO-REMOVABLE LCK,ND 121200-50,BLUE	440061	1
0007	MOTOR,AIR STRGT,25K-RPM,90PSI,1/2HP	GK103	1

FIGURE 9A. KANGAROO CUTTER ASSEMBLY, 9001LP



CONFIGURATION LIST		CONFIG.
PART NO.	DESCRIPTION	
9001LP	KANGAROO CUTTER ASSY, LOW PROFILE	BASIC
9001LP-1	KANGAROO CUTTER ASSY, LOW PROFILE; W/BOWMAN CONTROLLER OBSOLETE	-1
9001LP-2	KANGAROO CUTTER ASSY, LOW PROFILE W/BOWMAN AIR MOTOR OBSOLETE	-2
9001LP-3	KANGAROO CUTTER ASSY, LOW PROFILE W/BOWMAN AIR MOTOR AND CONTROLLER OBSOLETE	-3
9001LP-4	KANGAROO CUTTER ASSY, LOW PROFILE W/O AIR BRAKE	-4
9001LP-5	CUTTER ASSY, LOW PROFILE W/O AIR MOTOR	-5
9001LP-6	CUTTER ASSY, LOW PROFILE W/O MOTOR	-6

FIGURE 9B. KANGAROO CUTTER ASSEMBLY, 9001LP



<b>Cutter Assy, Kangaroo, Low Profile (See Fig. 9) Rev. AB, 9001LP</b>			
<b>Item #</b>	<b>Description</b>	<b>P/N</b>	<b>Qty</b>
0001	BALLSCREW CYL. ASSY,KCUTTER	KC310	1
0002	STANDOFF,M/F,MODIFIED	8851	4
0003	BEARING,COUPLER EXTENSION	8875	2
0004	MOUNT,MOTOR	8939	1
0005	SCREW,CAP,SKT HD,8-32X1/2,SST	101025	8
0006	WASHER,SPLIT LOCK,#8 SST	101738	8
0007	EXTENSION,MODIFICATION,CUTTER	8744	1
0008	CLUTCH,GEAR	8973	2
0009	KEYSTOCK,1/16X.375 LONG	8855	2
0010	SCREW,CAP,SKT HD,6-32X1/4,SST	103060	2
0011	WASHER,SPLIT #6 SST	100150	2
0012	WASHER,FLAT,#6 SST	100173	2
0013	SCREW,SET,6-32X1/4 SST	100099	1
0014	BEARING,TORQUE COUPLER	8986	1
0015	KEYSTOCK,1/8"SQ X1/2LG,ZINC PLATED	8874	1
0016	SPACER,BEARING	8897	1
0017	MOTOR ASSY,IN/OUT,66:1 MAXON	KC324	1
0018	MOTOR/GEAR BOX ASSY,CW/CCW,592:1	8959	1
0019	WASHER,FLAT,#8 SST(REOD .304)	100177	4
0020	WIRE,#20 WHITE BU	713326	4
0021	WIRE,#20 BLACK STRANDED 600V	713317	4
0022	STANDOFF,M/F MACHINED	8829	2
0023	STANDOFF,M/F MACHINED	8828	1
0024	MOUNT,REAR MOTOR	8833	1
0025	SCREW,CAP,SKT HD,1/4-20X3/4,SST	101022	7
0026	WASHER,SPLIT LOCK,1/4"SST	101740	7
0027	TOW CABLE,TRANSPORTER& K-CUTTER,27"	120504	2
0028	END CAP	8831	1
0029	STANDOFF,MACHINED	8852	4
0030	RECEPTACLE,8-PIN,ELECTRIC CONNECTOR	8894	1
0031	FITTING,SWIVEL W/ BOLT	8823	1
0032	FITTING,BARBED	8824	1
0033	CONNECTOR,STRAIGHT,3/8TUBE,PUSH LCK	HW1082	1
0034	TUBING,BLACK FLEXIBLE	8804	0.83
0035	HOSE,1/4",FLEXEEL,W/O FITTINGS	KC141	0.67
0036	UP/DOWN AXIS ASSY	8963	1
0037	O-RING,BALLSCREW HOUSING,2-043,EP	8801	4
0038	TUBE,SHRINK,BLACK 1/8"	712789	1
0039	RECEPTACLE,1/4-18 NPT(2POLE)	162546	1

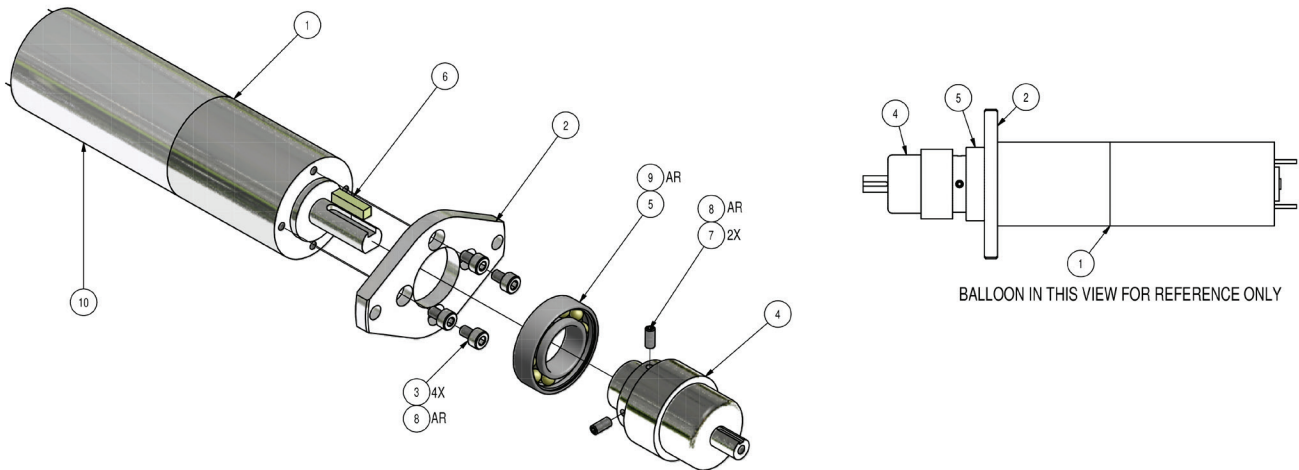


Cutter Assy, Kangaroo, Low Profile (See Fig. 9) Rev. AB, 9001LP			
Item #	Description	P/N	Qty
0039	RECEPTACLE,1/4-18 NPT(2POLE)	162546	1
0040	SNUBBER,ASSY,F/CUTTER	9004	2
0041	LUBE,ORING, SUPER O LUBE, 2 OZ TUBE	439986	1
0042	MRO-SEAL.HGH PRESS,ND 440400-50,BRN	445091	1
0043	CONNECTOR,90°,3/8 TUBE,PUSH LOCK	HW1081	1
0044	SCREW,SET,10-32X1 SST	712453	2
0045	NUT,JAM,10-32,SST	8799	2
0046	SCREW,SET,1/4-20X1 SST	101047	1
0047	NUT,HEX,SST,1/4-20	101040	1
0048	VALVE,PURGE,P&T	CP063	1
0049	HOUSING,LOW PROFILE,REAR MOTOR	KC075	1
0050	FLANGE,END CAP	8748	1
0051	O-RING,END CAP,2-042,EP	8825	1
0052	SCREW,CAP,SKT HD,10-32X1/2,SST	102001	3
0053	WASHER,SPLIT #10 STL	100152	3
0054	WASHER,FLAT,#10 SST	100140	3
0055	PLUG,THREADED 7/16-20,SKID MOUNT	HW915	4
0056	FITTING,BRASS,AIR,3/8"NPT	220492	1
0057	MRO-TIE,CABLE,14"X3/16"X1/6"	440306	1
0058	MRO-TIE,CABLE,3/32"X4",WHT/CLR	440307	4
0059	LABEL,CUES,2X4"	962036	1
0060	CABLE/HOSE ASSY,K. CUTTER	KC018	1
0061	MRO-REMOVABLE LCK,ND 121200-2,BLUE	CS036	1
0062	CABLE,TOW,CUTTER 39.5" LENGTH	KC087	2
0063	RING-D,CHAIN,TOW CABLE,3/16"SS	712799	5
0067	LABEL,LASERTAB MARKER, .560 X .560	CS222	1
0068	LABEL,THERMAL XFR,3.00"W X 2.00"H	CS223	1
0069	LABEL,ETL MARK,2" X 1"	CS224	1
0073	WRENCH,.9HP AIR MOTOR	KC092	1
0084	MRO-GREASE,HEAVY DUTY REDMAN	440030	1
0087	MANUAL, KANGAROO/GIANT KANG CUTTER	960971	1

## NOTE:

EL281 is the replacement "motor only" for the 8959 MOTOR/GEAR BOX ASSY,CW/CCW,592:1  
See KC324 MOTOR ASSY,IN/OUT,66:1 MAXON drawing (New) Page CTR-18

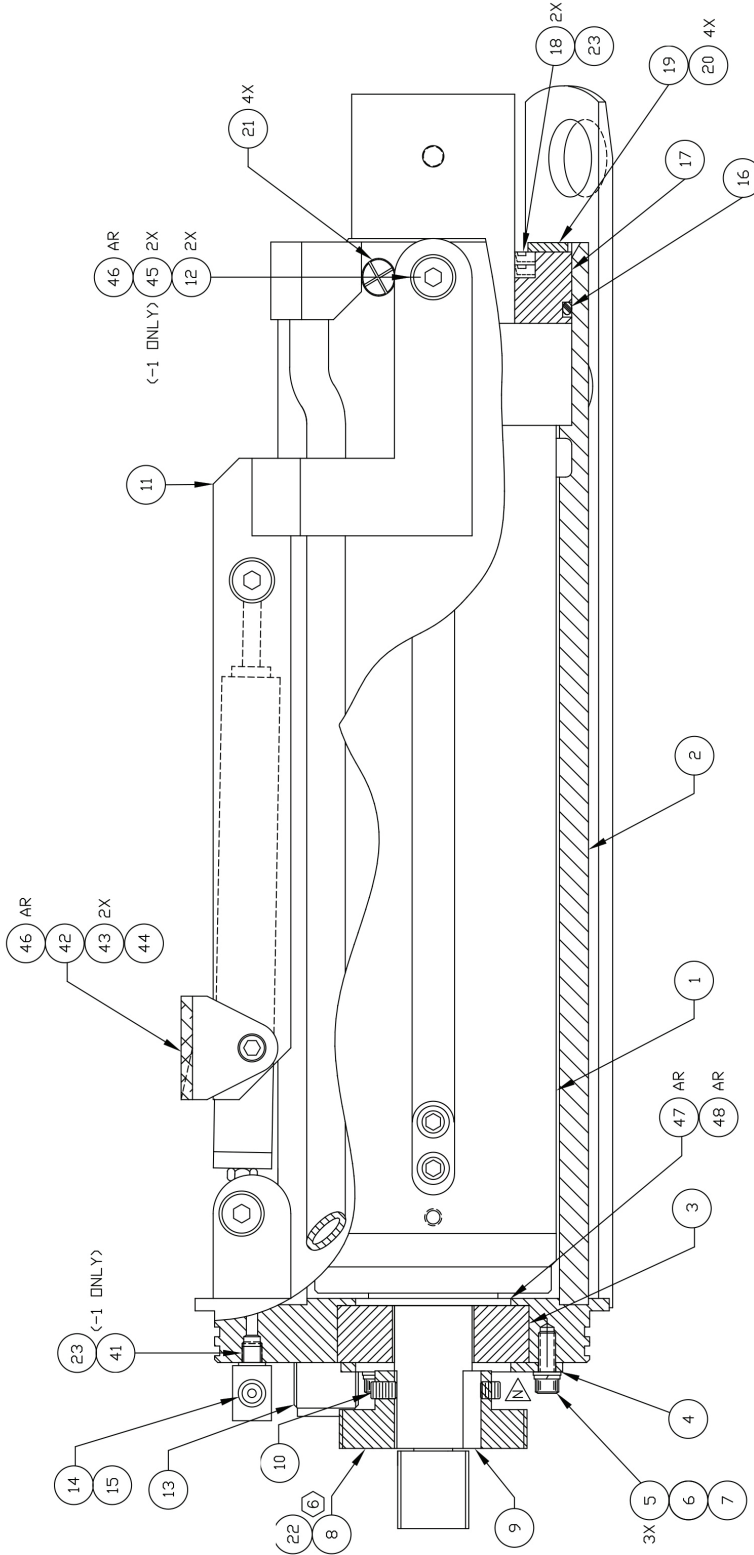
FIGURE 10. MOTOR ASSY,IN/OUT,66:1 MAXON, KC324



MOTOR ASSY,IN/OUT,66:1 MAXON (See Fig. 10) Rev. C, KC324			
Item #	Description	P/N	Qty
0001	GEARMOTOR,66:1,F/KC324 ASSY	KC107-1	1
0002	PLATE,MICROMO TO MAXON,Ø8MM	KC106	1
0003	SCREW,SHCS,M3 X 5MM LG,SST	HW460	4
0004	ADAPTER,MICROMO TO MAXON,Ø8MM	KC105	1
0005	BEARING,TORQUE COUPLER	8986	1
0006	KEYSTOCK,1/8" SQ X1/2LG,ZINC PLATED	8874	1
0007	SCREW,SET,4-40X1/4 SST	100052	2
0008	MRO-REMOVABLE LCK,ND 121200-2,BLUE	CS036	1
0009	MRO-GREASE,HEAVY DUTY REDMAN	440030	1

NOTE:  
EC2007 is replacement motor only for KC107-1 GEARMOTOR,66:1,F/KC324 ASSY

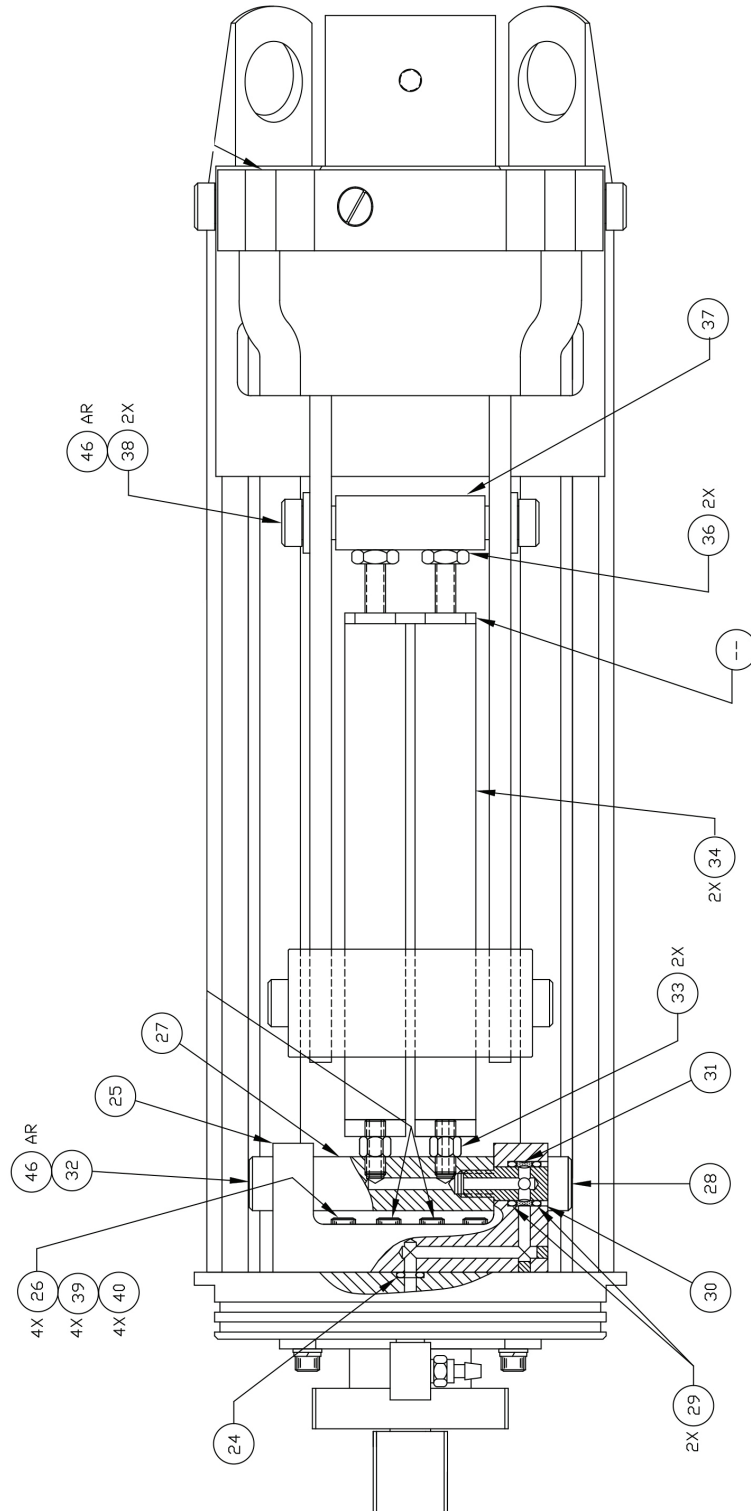
FIGURE 11A. BALLSCREW CYLINDER ASSEMBLY KC310



CONFIGURATION LIST

PART NO.	DESCRIPTION	NOTES
KC310	BALLSCREW CYLINDER ASSY, KANGAROO CUTTER	BASIC
KC310-1	BALLSCREW CYL. ASSY W/O AIR BRAKE, K. C.	-1

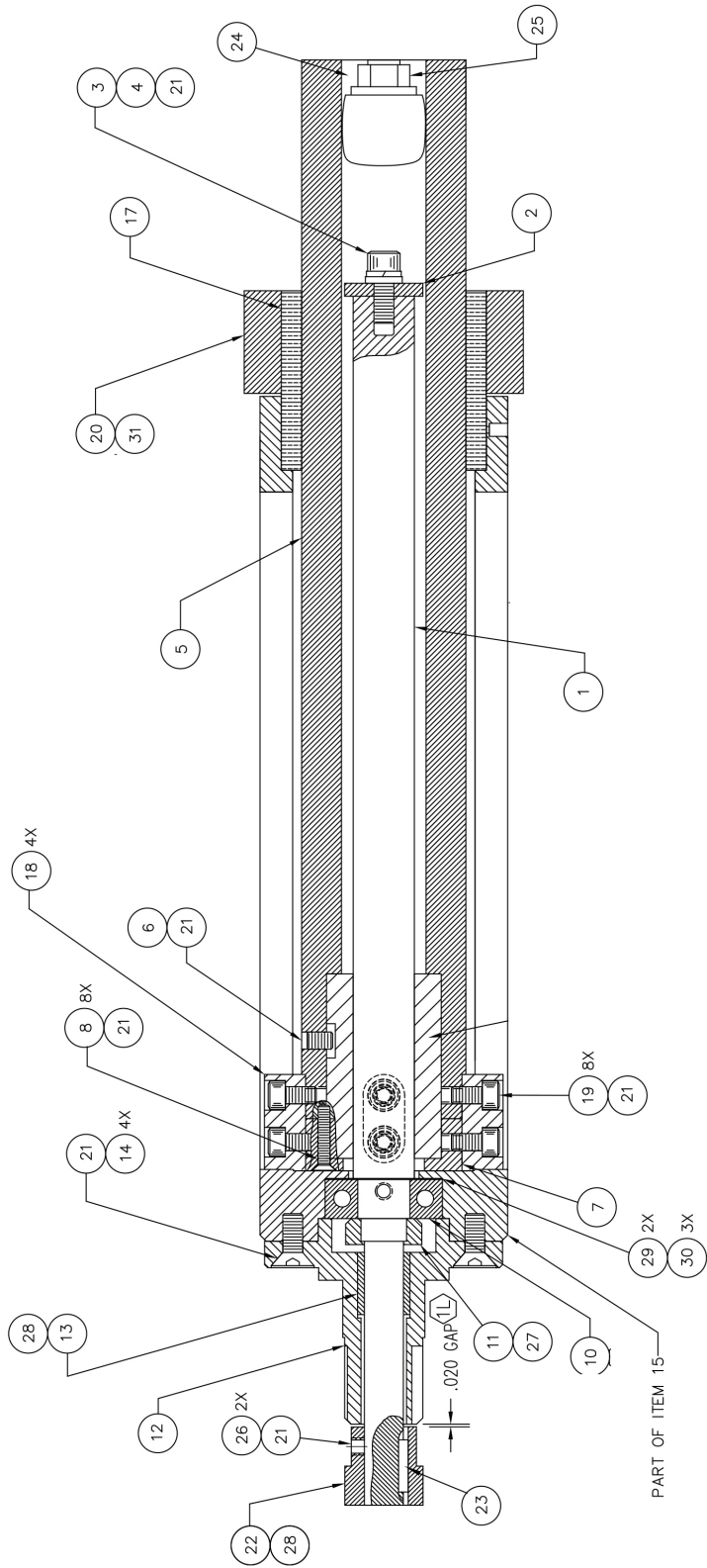
FIGURE 11B. BALLSCREW CYLINDER ASSEMBLY KC310



Ballscrew Cylinder Assembly (See Fig.11) Rev. P, KC310			
Item #	Description	P/N	Qty
0001	CYLINDER SHAFT ASSY	8962	1
0002	HOUSING,BALLSCREW	KC076	1
0003	FLANGE,ROTATIONAL BEARING	9000	1
0004	RETAINER,BEARING	8944	1
0005	SCREW,SHCS,8-32X3/8 SST	100448	3
0006	WASHER,FLAT,#8 SST(REOD .304)	100177	3
0007	WASHER,SPLIT LOCK,#8 SST	101738	3
0008	GEAR,CW/CCW DRIVEN	8971	1
0009	KEYSTOCK,3/16X.625 LONG	8873	1
0010	SCREW,SET,8-32X1/4 SST	100147	2
0011	CLAMP/BEARING ASSY	8775	1
0012	SCREW,SHLDR,(.500)	8815	2
0013	CONNECTOR,STRAIGHT,3/8TUBE,MINI LCK	HW1082	1
0014	FITTING,SWIVEL	8823	1
0015	FITTING,BARBED	8824	1
0016	O-RING,REAR HOUSING,2-144,EP	8933	1
0017	RING,IN/OUT SHAFT SEAL	8827	1
0018	SEAL,HALLITE WIPER	8932	2
0019	RETAINER,IN/OUT SHAFT SEAL	8826	1
0020	SCREW,FLAT,4-40X1/4 PHIL	712402	4
0021	SCREW,FLAT,8-32X3/8 PHIL SST	100146	4
0022	MRO-RET.COMP,.015GP,ND541200-50,GRN	CS092	1
0023	MRO-SEAL.HGH PRESS,ND 440400-50,BRN	445091	1
0024	O-RING,MANIFOLD,2-006,EP	8798	1
0025	MANIFOLD,CLAMP	8822	1
0026	SCREW,CAP,SKT HD,6-32X1/2,SST	712417	4
0027	PIN,PIVOT	8821	1
0028	SCREW,MANIFOLD PIVOT	8814	1
0029	O-RING,CLAMP PIVOT,2-011,EP	8805	2
0030	SEAL,BEARING	8812	1
0031	SPACER,O-RING	8813	1
0032	SCREW,(.375)SHOULDER	8808	1
0033	NIPPLE,AIR CYLINDER PIPE	8772	2
0034	CYLINDER,AIR	8997	2
0036	NUT,JAM,10-32,SST	8799	2
0037	CLAMP,PIVOT PIN	8819	1
0038	SCREW,SHLDR,(.313)	8807	2
0039	WASHER,SPLIT #6 SST	100150	4
0040	WASHER,FLAT,#6 SST(REOD .267)	100178	4
0042	CONTACT,PIVOT	8718	1
0043	SCREW,SHLDR,8-32,1255 SHOULDER	109115	2
0044	SAFETY WALK,BLACK MDM GR 6INX60FT	010550	0.001
0046	MRO-GREASE,HEAVY DUTY REDMAN	440030	1



FIGURE 12. CYLINDER SHAFT ASSEMBLY, 8962



Cylinder Shaft Assy (See Fig. 12) Rev. Q, 8962			
Item #	Description	P/N	Qty
0001	BALLSCREW ASSEMBLY	8978	1
0002	WASHER,THRUST,BALL SCREW	8947	1
0003	WASHER,SPLIT LOCK,#10 SST	101739	1
0004	SCREW,CAP,SKT HD,10-32X1/2,SST	102001	1
0005	SHAFT,CYLINDER	8964	1
0006	SCREW,SET,8-32X1/4 SST	100147	1
0007	CYLINDER,STOP	8946	1
0008	SCREW,FLAT,4-40X5/8 PHIL SST	100060	8
0010	SCREW,BALL,ROTATIONAL BEARING	8998	1
0011	NUT,RETAINING	8750	1
0012	FLANGE, FOR BEARING AND SHAFT	8940	1
0013	BEARING,SHAFT,BALL SCREW	8996	1
0014	SCREW,FLAT,10-32X1/2 SST	103052	4
0015	CYLINDER/BEARING HOUSING,WELDMENT	KC323	1
0017	BEARING, THRUST	8950	1
0018	RAIL GUIDE	8942	4
0019	SCREW,SHCS,8-32X3/8 SST	100448	8
0020	BEARING,ASSEMBLY ROTATIONAL	8969	1
0021	MRO-REMOVABLE LCK,ND 121200-50,BLUE	440061	1
0022	GEAR,MODIFIED,IN-OUT DRIVEN	8970	1
0023	KEYSTOCK,3/32X.5 LONG	8872	1
0024	MRO-GASKET MAKER,HI-TEMP	445063	1
0025	PLUG,EXPANSION.MODIFIED	8782	1
0026	SCREW,SET,8/32X1/8,CUT PT,SS	HW413	2
0027	MRO-PERMANENT LOCK,ND 140500-50,RED	440060	1
0028	MRO-RET.COMP,.015GP,ND541200-50,GRN	CS092	1
0029	SHIM,1.125OD X .750ID X .002THK,SST	HW1044	2
0030	SHIM,.750ID X 1.125OD X .005THK,SST	HW1045	3
0031	MRO-GREASE,SYNTH,SIL-PTFE,14-OZ	CS476	1

FIGURE 13A. UP/DOWN AXIS ASSEMBLY, 8963

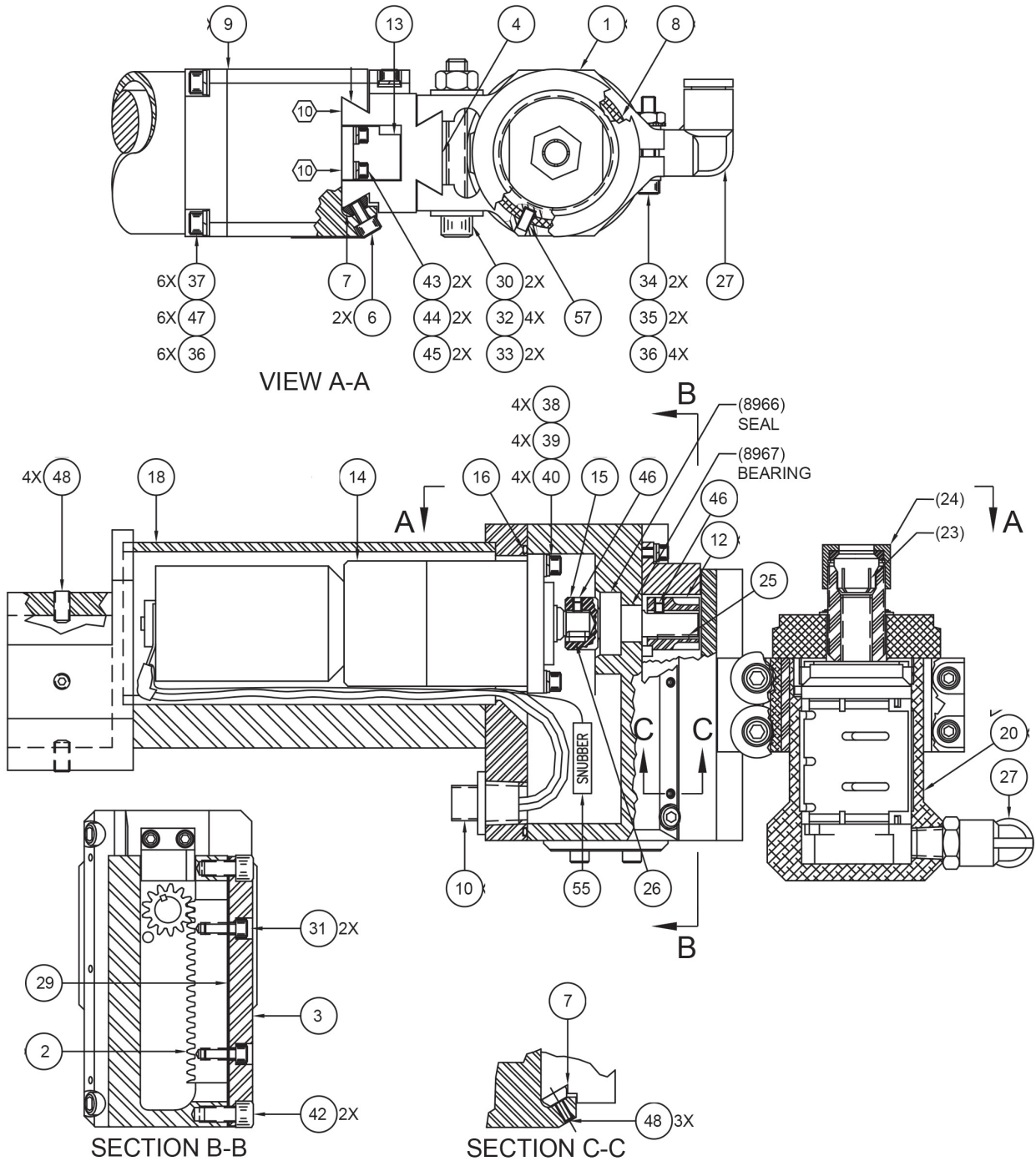
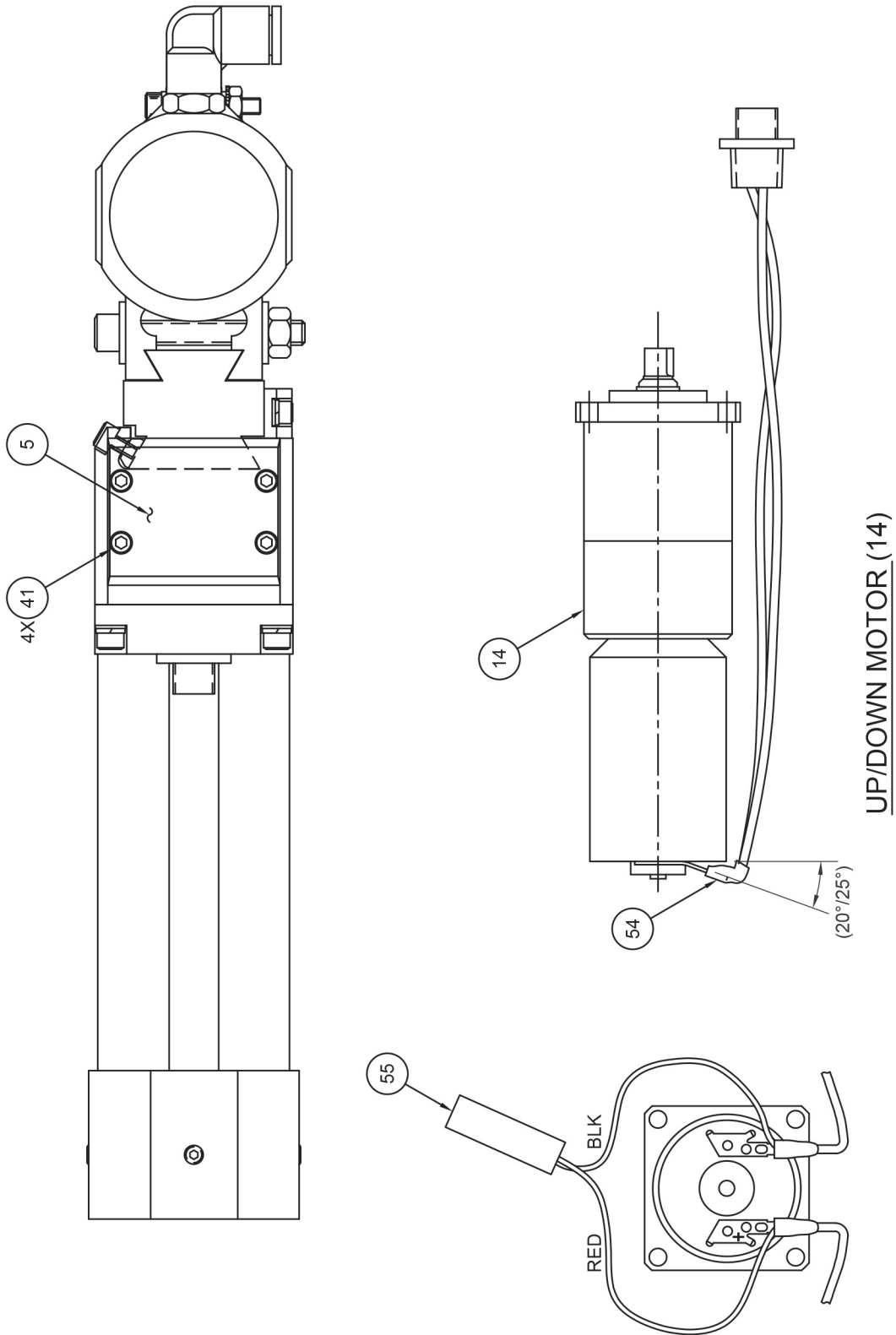


FIGURE 13B. UP/DOWN AXIS ASSEMBLY, 8963



UP/DOWN Axis Assembly (See Fig. 13) Rev. Y, 8963			
Item #	Description	P/N	Qty
0001	CLAMP,AIR MOTOR,F/KC089 AND KC099	8994	1
0002	DOVETAIL RACK,MODIFIED	8992	1
0003	MOUNT,DOVETAIL RACK	8990	1
0004	SLIDE,DOVETAIL	8989	1
0005	STOP,DOVETAIL SLIDE	KC025	1
0006	SCREW,CAP,SKT HD,8-32X1/4,SST	100142	2
0007	PLATE,PRESSURE	8984	1
0008	PAD,COMPRESSION,.9HP AIR MTR .047”T	KC091	1
0009	CARRIAGE,DOVETAIL	8979	1
0010	RECEPTACLE,1/4-18 NPT(2POLE)	162546	1
0011	MRO-SOLDER,SN63,.025 DIA	CS041	1
0012	GEAR,DOVETAIL SLIDE	8972	1
0013	BLOCK,STOP	8968	1
0014	MOTOR/GEARBOX ASSY,UP/DOWN,246:1	8957	1
0015	SHAFT,EXTENSION,UP/DOWN MOTOR	8956	1
0016	O-RING,UP/DOWN MOTOR,2-041,EP	8955	1
0017	MRO-GREASE,SUPERLUBE 41150 -14.1-OZ	CS476	1
0018	HOUSING,UP/DOWN AXIS MOTOR	8948	1
0020	AIR MOTOR ASSY,.9HP,KANGAROO CUT,6”	KC099	1
0025	KEYSTOCK,1/16X.375 LONG	8855	1
0026	KEYSTOCK,1/8”SQ X .188LG	8854	1
0027	CONNECTOR,90°,3/8 TUBE,PUSH LOCK	HW1081	1
0029	SPACER,RACK	8766	1
0030	SCREW,SHCS,1/4-20X1 7/8 SST	100449	2
0031	SCREW,CAP,SKT HD,6-32X3/8,W/NYLO,SS	101621	2
0032	WASHER,FLAT,1/4”SST	101736	4
0033	NUT,LOCK W/NYL INS 1/4-20 SST	HW030	2
0034	SCREW,CAP,SKT HD,8-32X1.00,SST	103068	2
0035	NUT,LOCK NYLON INS,SST,8-32	112532	2
0036	WASHER,FLAT,#8 SST(RED OD .304)	100177	10
0037	SCREW,CAP,SKT HD,8-32X1/2,SST	101025	6
0038	SCREW,CAP,SKT HD,6-32X1/2,SST	712417	4
0039	WASHER,SPLIT #6 SST	100150	4
0040	WASHER,FLAT,#6 SST(RED OD .267)	100178	4
0041	SCREW,PAN,6-32X5/16 PHIL SST	101088	4
0042	SCREW,CAP,SKT HD,10-32X3/8,SST	103030	2
0043	SCREW,CAP,SKT HD,4-40X3/8,BLACK	100061	2
0044	WASHER,SPLIT #4 SST	100170	2
0045	WASHER,FLAT,#4 SST(RED OD .209)	101737	2

**UP/DOWN Axis Assembly (See Fig. 13) Rev. Y, 8963**

Item #	Description	P/N	Qty
0045	WASHER,FLAT,#4 SST(RED OD .209)	101737	2
0046	SCREW,SET,4-40X1/8 SST	100050	2
0047	WASHER,SPLIT LOCK,#8 SST	101738	6
0048	SCREW,SET,10-32X3/8 SKT SST	101602	7
0049	MRO-REMOVABLE LCK,ND 121200-2,BLUE	CS036	1
0050	MRO-SEAL.HGH PRESS,ND 440400-50,BRN	445091	1
0051	MRO-ADHES.INSTANT,ND 310035-28,CLR	440094	1
0052	MRO-PERMANENT LOCK,ND 140500-50,RED	440060	1
0054	TUBE,SHRINK,BLACK 1/8"	712789	1
0055	SNUBBER,ASSY,F/CUTTER	9004	1
0056	MRO-SEALANT,POURABLE TRANSLUCENT	445066	1
0057	SCREW,SET,6-32X1/4 SST	100099	1
0061	MRO-GREASE,HEAVY DUTY REDMAN	440030	1
0062	MRO-RET.COMP..015GP,ND541200-50,GRN	CS092	1

KC099 is the sub-6" version of KC089

The KC099 uses the same #8994 clamp, KC091 compression pad. The spare parts for the KC099 and KC089 are different and listed below.

KC089 additional part #'s

Airmotor extension for KC089 = part # KC093

Collet for KC089 is # KC095 & the nut is part # KC094

Rebuild kit is part # KC902

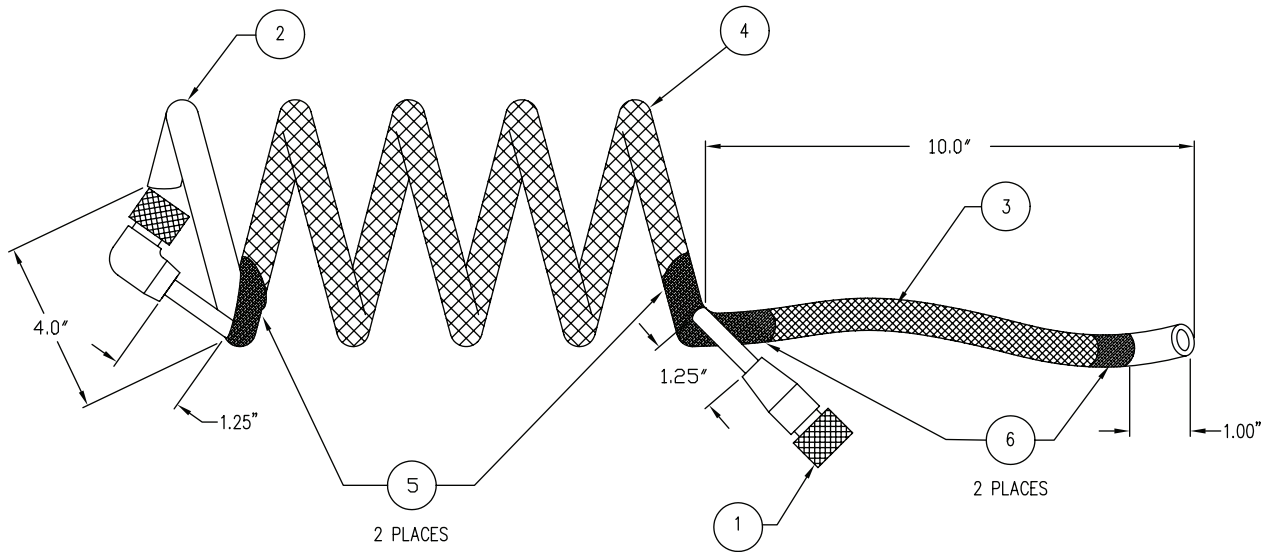
KC099 additional part #'s

Airmotor extension is part # KC093-1

Collet for KC099 is Part # KC132 & the nut is part # KC133

Rebuild kit is part # KC905

FIGURE 14. CABLE/HOSE ASSEMBLY, K. CUTTER, KC018



Cable/Hose Assy, K. Cutter (See Fig. 14) Rev. C, KC018			
Item #	Description	P/N	Qty
-1	· Cable, Power Quick Disconnect	KC017	1
-2	· Hose, Air, Coiled	8931	7
-3	· Tube, Expandable 3/8 Nylon	015021	1
-4	· Tube, Expandable 1/2 Nylon	165005	7
-5	· Tube, Shrink, Black 3/4 ADH	712579	1
-6	· Tube, Shrink, Black 3:1 Ratio 1/2"	712572	1