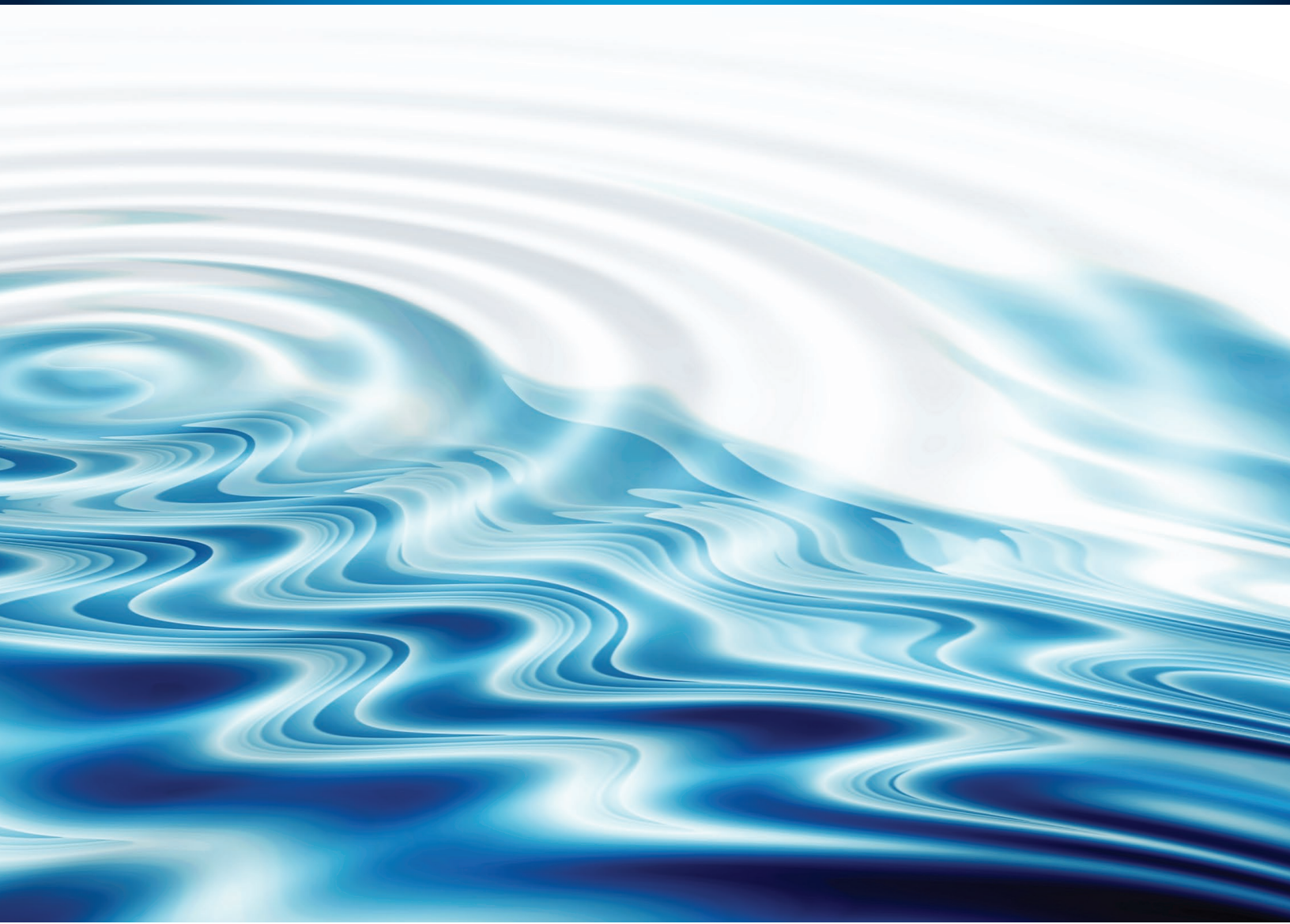




# Currahee Cutter

## Parts & Accessories

P/N CK952 Revision: 02.16.2022



**CUES**® equipment is designed to be easy to use during day to day operation. However, it is powered electrically and thus must be operated with care and safety. PLEASE READ THE INFORMATION ON SAFETY AND MAINTENANCE EVEN IF THE SYSTEM IS SET UP BY SOMEONE ELSE.

Care was taken in the design of this product and in the production of this document and related materials. However, **CUES**® makes no warranty for the use of its products and assumes no responsibility for any errors or omissions in this document or for incidental or consequential damages resulting from the use of the products or the information contained in this document. Specifications may change without notice.

All rights are reserved. No part of this publication may be reproduced, stored in any information system, or transmitted by any means, manual, electronic, or mechanical without the prior written permission of **CUES**®.

We would be pleased to hear from you. If you see any errors or desirable extensions or improvements, please write us at the following address, C/O Operator's Manuals: **CUES**® Corporate Office 3600 Rio Vista Avenue Orlando, Florida 32805

### *More locations to serve you!*

**CUES® Corporate Office**  
3600 Rio Vista Avenue  
Orlando, Florida 32805  
800-327-7791  
407-425-1569 FAX

8am - 6pm EST M-Fri

**CUES® Atlanta**  
3755 Industrial Ct.  
NW, Suite 14  
Suwanee, GA 30024  
770-945-8674  
770-945-9604 FAX

8am - 5pm EST M-Fri

**CUES West**  
1943 S. Augusta Ct.  
Ontario, CA 91761  
909-923-2001  
909-923-2091 FAX

7<sup>AM</sup> - 6<sup>PM</sup> PST M-Fri

**CUES® Northern California**  
640 Eubanks Court, Suite C  
Vacaville, CA 95688  
Phone: 866-358-CUES  
Fax: 707-449-0260

8:00<sup>AM</sup> - 5<sup>PM</sup> PST M-Fri

**CUES® MidWest**  
2325 Parklawn Drive, Suite K  
Waukesha, WI 53186  
Phone:: 262-717-3165  
Fax: 262-717-3167

7AM - 4PM CST M-Fri

**CUES® Canada**  
1675 Sismet Rd., #2  
Mississauga, Ontario  
Canada L4W 1P9  
905-238-9178  
905-238-5018 FAX

8<sup>AM</sup> - 5<sup>PM</sup> EST M-Fri

**CUES Northwest**  
1000 NW Commerce Ct., Suite B  
Estacada, OR 97023  
Phone: 1.800.432.1549 ext: 403  
Fax: 909-923-2051

**CUES**® toll free hot line for  
Customer Service and ordering parts:  
800-854-CUES (800-854-2837)

Copyright © 2019 **CUES**®

All rights reserved. No part of this publication covered by the copyright hereon may be reproduced or used in any form by any means - graphic, electronic, or mechanical, including photocopying, recording, taping, or information storage and retrieval systems - without the expressed written permission of **CUES**®.  
Violators will be prosecuted.

Styles and specifications are subject to change without notice. First version published in 2019.  
Printed in the United States of America.

## SAFETY PRECAUTIONS

Precautions must always be taken when operating electronic equipment. Exposed wires, damaged equipment, or improper operation can lead to a dangerous situation.

Please take a few minutes and read this entire manual prior to operating the equipment. Follow all safety procedures and thoroughly inspect equipment prior to use each day. This will help the equipment retain its full value and will reduce the risk of injury, property, and/or equipment damage.



- Read the entire manual before attempting to connect or operate any equipment.
- Connect and disconnect cables only when the electric power is turned OFF.
- Never remove protection covers from the equipment or power generator. Internal repairs should only be done by an authorized CUES technician.
- If using a portable generator, always place it in an open area away from other equipment, manholes or obstructions prior to start-up; do not use a portable generator in an enclosed area.
- Upon receipt of the equipment, check for visible damage. If there is any evidence of rough handling, if damage is found, or if any equipment is missing, please contact the CUES Customer Service at 1-800-327-7791.

## PERSONAL SAFETY EQUIPMENT & TRAINING

CUES stresses the use of appropriate safety equipment while working in and around manholes and during system operation. Safety should constantly remain the utmost priority. NOTE: The user of CUES products is responsible for all training and operation under federal, state and local guidelines and regulations for both confined space entry and traffic control. Recommended safety equipment includes but is not limited to the following:

- Safety goggles
- Work gloves
- Steel-toed boots
- Reflective vests
- Hard hats
- Filter masks (full respirators may be necessary)
- Flashlights
- Safety lines
- Traffic warning signs
- Traffic cones
- Gas detectors
- Ventilation fans

***CUES ® makes no warranty for the use of its products and assumes no responsibility for any errors or omissions in this document or for incidental or consequential damages resulting from misuse of the products.***

## CUES STANDARD 12 MONTH WARRANTY

CUES (“CUES”) warrants that all parts, components, and equipment manufactured by CUES shall be free from defects in material and workmanship under normal use and service for which it was intended for a period of twelve (12) months from the date of shipment of materials by CUES to the purchaser. CUES’ obligation under this warranty is limited, at CUES’ option, to replacing or repairing, free of charge, any defective materials returned, freight prepaid, to the CUES designated service facility. For all warranty claims, the materials must be returned in accordance with CUES Material Return Policy.

Major items of equipment, such as vehicles, generators, etc., furnished, but not manufactured by CUES, will be covered only under the warranty of the third party manufacturer of such equipment. Expendable parts, such as light bulbs, fuses, connectors, etc., are excluded from this warranty.

Purchaser must notify CUES of a breach of warranty not later than the last day of the warranty period; otherwise, such claims shall be deemed waived.

CUES does not warrant the materials to meet the requirements of the safety codes of any federal, state, municipal or other governmental or administrative jurisdiction. Purchaser assumes all risk and liability whatsoever resulting from the use of its products, whether used singly or in combination with other products, machines or equipment.

This Warranty shall not apply to any materials, or parts thereof, which have; (a) been repaired or altered by anyone other than CUES without CUES’ written consent; (b) been subject to misuse, abuse, negligence, accident, or damage; (c) not been installed or operated in accordance with CUES’ printed instructions, or; (d) been operated under conditions exceeding or more severe than those set forth in the specifications of design tolerance of the equipment.

THIS WARRANTY AND THE OBLIGATION AND LIABILITIES OF CUES HEREUNDER ARE EXCLUSIVE AND IN LIEU OF (AND PURCHASER HEREBY WAIVES) ALL OTHER WARRANTIES, GUARANTEES, REPRESENTATIONS, OBLIGATIONS, OR LIABILITIES, EXPRESSED OR IMPLIED, ARISING BY LAW OR OTHERWISE, INCLUDING ANY IMPLIED WARRANTY OF MERCHANTABILITY OR FITNESS FOR A PARTICULAR PURPOSE, REGARDLESS WHETHER OR NOT OCCASIONED BY CUES’ NEGLIGENCE.

CUES SHALL NOT BE LIABLE FOR ANY LOSS OR DAMAGE RESULTING, DIRECTLY OR INDIRECTLY, FROM THE USE OR LOSS OF USE OF THE MATERIALS, OR FOR SPECIAL, INDIRECT, OR CONSEQUENTIAL DAMAGES, ECONOMIC LOSSES, LOSS OF PROFITS, LOSS OF BUSINESS, OR LOSS OF BUSINESS OPPORTUNITY. Without limiting the generality of the foregoing, this exclusion from liability embraces Purchaser’s expenses for downtime or for making up downtime, damages to property, and injury to or death of any persons.

CUES neither assumes nor authorizes any person (including employees, agents, or representatives of CUES) to assume for it any other liability, guarantee, or warranty in connection with the sale or use of the materials, and no oral agreements, warranties, or understandings exist collateral to or affecting this warranty.

This warranty shall not be extended, altered, modified, or waived except by a written instrument signed by CUES.

## CUES MATERIAL RETURN POLICY

To ensure the orderly return of CUES products from our customers and to assure proper credit and warranty replacements handled in a timely manner, CUES has implemented a MATERIAL RETURN AUTHORIZATION (MRA) SYSTEM. Please read and follow the instructions below to ensure your MRA is handled properly and efficiently:

1. Once it is determined that a CUES product needs to be returned, call the CUES Parts Department in Orlando at 1-800-327-7791.
2. CUES will provide an MRA number by phone and ask a few questions.
3. CUES will then mail or fax the MATERIAL RETURN AUTHORIZATION (MRA) FORM with the MRA number, or include it with the replacement parts, if applicable.
4. Follow all instructions on the MRA Form. Make 2 copies - one for your records and the other will be used as a packing list.
5. Place an MRA sheet in with the parts that are shipped back to CUES along with a copy of the original packing slip or invoice, if possible. Send only the parts originally agreed upon with your Parts Representative. Any deviations/changes will require an additional MRA.
6. Make sure to include a copy of the MRA form for a packing slip.
7. Write the MRA number on the outside of the box.
8. Please take care in packing the parts that are to be shipped back to CUES. Parts must be individually protected from each other and appropriate packing material must be used to prevent damage during shipping.
9. Freight on the material returned is to be prepaid by the customer. Depending on the warranty determination, CUES, at its' option, may credit freight charges both ways.
10. The parts must be returned to CUES within 5 days of receipt of the MRA for credit to be granted.

Under normal circumstances, a warranty determination can be made within 30 days, and if under warranty, the part will be replaced at no charge. A credit will be issued if you have already received a replacement part. No credits will be issued until CUES receives the defective part.

\*\*\*\*\*NOTE\*\*\*\*\*

CUES will not warrant look-alike parts sold by competitors and reserves the right to charge a restocking fee. CUES shall not be liable for any loss or damage resulting, directly or indirectly, from the use of the materials, or for special, indirect, or consequential damages, economic losses, loss of profits, loss of business, or loss of business opportunity.

Without limiting the generality of the foregoing, this exclusion from liability embraces purchaser's expenses for downtime or for making up downtime, damages to property, and injury to or death of any persons.

CUES neither assumes nor authorizes any person (including employees, agents, or representatives of CUES) to assume for it any other liability, guarantee, or warranty in connection with the sale or use of the materials, and no oral agreements, warranties, or understandings exist collateral to or affecting this warranty. This warranty shall not be extended, altered, modified, or waived except by a written instrument signed by an authorized CUES representative.



## CUES PARTS & SERVICE

At CUES, we realize your return on investment is directly related to daily production in the field. By stocking the largest inventory of OEM equipment in our industry, CUES strives to ship all parts orders on the same day or within 24 hours after receipt of the order.

Whether you need a camera or a fuse, CUES will quickly process and ship your order in accordance with your schedule requirements! Our experienced parts professionals can help you with parts identification, shipping methods, equipment operation questions, and connect you to the correct specialist for troubleshooting!

CUES offers four convenient stocking locations that contain a large assortment of parts, finished products, portable, and truck mounted systems. Texas, Arizona, Oklahoma and Louisiana customers can be serviced by our local dealerships. Contact us at your most convenient stocking location! For authorized dealer locations, log onto our website at [www.cuesinc.com](http://www.cuesinc.com).

Parts can be ordered via phone or facsimile! For operating hours, contact information, and locations, log onto our website at [www.cuesinc.com](http://www.cuesinc.com). Contact us at your most convenient stocking location! Log onto our website at [www.cuesinc.com](http://www.cuesinc.com) to view the CUES Parts Department & Dealers hours & locations.

CUES Parts Department: Parts turnaround is normally within 24 hours after receipt of order. Please note that special shipping arrangements can be made at the time of the order. All return shipments received at CUES freight collect will be refused upon delivery unless previously authorized by CUES personnel. Normal operating hours are 8am to 5pm, EST., Phone: 800-327-7791, Fax: 800-831-1184.

CUES Service Depot: Service turnaround is normally 72 hours or less upon receipt at our depot, excluding weekends and holidays. All return shipments received at CUES freight collect will be refused upon delivery unless previously authorized by CUES personnel. Normal operating hours are 8am to 5pm, EST., Phone: 800-327-7791.

### *West Coast*

**For West Coast Customers:**

The parts and service depot is located at 1943 S. Augusta Court, Ontario, CA, 91761. Normal operating hours are 8am to 5pm, PST  
Phone: 800-544-8695

### *Canada*

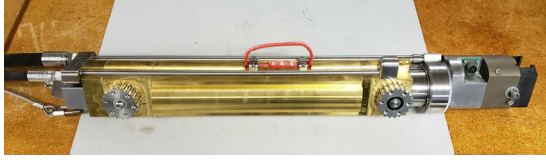
**For Canadian Customers:**

The parts and service depot is located at 1675 Sismet Road, Unit 2 & 3, Mississauga, Ontario L4W1P9  
Phone: 905-238-9178

### *Midwest*

**CUES Midwest:**

[www.cuesmidwest.com](http://www.cuesmidwest.com)  
2325 Parklawn Drive, Suite K  
Waukesha, WI 53186  
Phone: 262-717-3165  
Fax: 262-717-3167



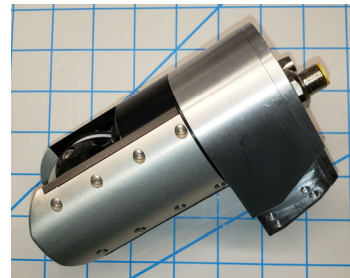
- CK301 CK600 WHEELED CUTTER ASSEMBLY



- CK304 ASSEMBLY, DUAL CAMERA, CURRAHEE



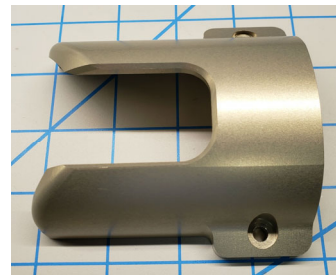
- CK365 KIT, TRAVEL LIMITER, CAMERA ASSEMBLY
- CONTAINS: CK120-1, CK120-2
- EASES ACCESS TO ELEVATED INVERTS



- CK314 CAMERA, CUTTER, CURRAHEE
- CUTTING CAMERA



- 10/RP3121-NTSC-IR P340/GC4 1" CAMERA-NTSC-IR FILT
- MAINLINE CAMERA



- CK193 WEAR RING, CUTTING CAMERA
- USE WITH CK194 CLAMP, 102001 SCREWS, 101739 WASHERS



- CK176 CABLE, CAMERA INTERCONNECT



- CK330 CABLE,CAMERA INTERFACE,FWD,CURRAHEE



- CK326 KIT, WHEEL, 3", CARBIDE
- INCLUDES: HW4795, SCREW,FLAT,1/4-20X.75,SKT,A286SST



- CK327 KIT, WHEEL, 3", DIAMOND
- INCLUDES: HW4795, SCREW,FLAT,1/4-20X.75,SKT,A286SST



- CK328 KIT, WHEEL, 5", CARBIDE
- INCLUDES: HW4795, SCREW,FLAT,1/4-20X.75,SKT,A286SST

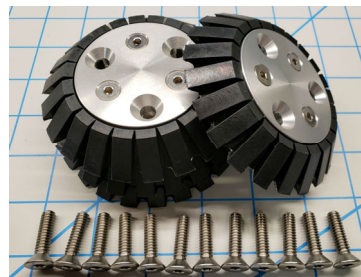


- CK329 KIT, WHEEL, 5", DIAMOND
- INCLUDES: HW4795, SCREW,FLAT,1/4-20X.75,SKT,A286SST

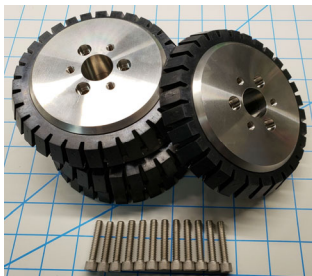




- CK366 KIT, WHEEL, 3", RUBBER
- INCLUDES: HW4795, SCREW, FLAT, 1/4-20X.75, SKT, A286SST



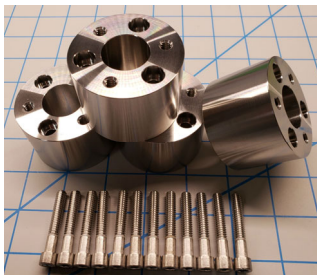
- CK333 KIT, WHEEL, 3", RUBBER, FLAT STYLE
- INCLUDES: HW4861, SCREW, FLAT, 1/4-20X1, SKT, A286SST



- CK334 KIT, WHEEL, 5", RUBBER
- INCLUDES: HW4791, SCREW, CAP, SKTHD, 1/4-20X1.25, A286SST



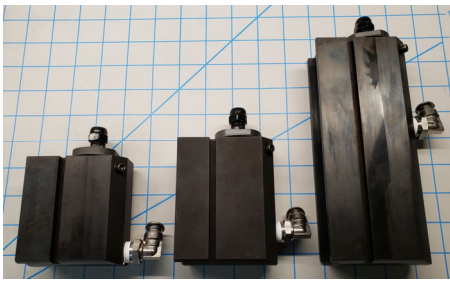
- CK335 KIT, WHEEL SPACER, .5"
- INCLUDES: HW4792, SCREW, CAP, SKT HD, 1/4-20X1.5, A286SST



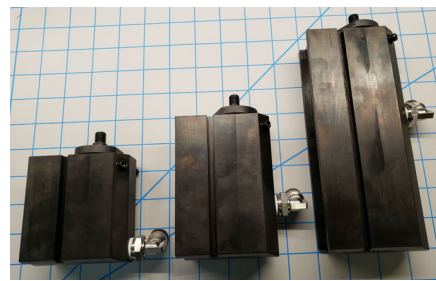
- CK336 KIT, WHEEL SPACER, 1.5"
- INCLUDES: HW4793, SCREW, CAP, SKTHD, 1/4-20X1.75, A286SST



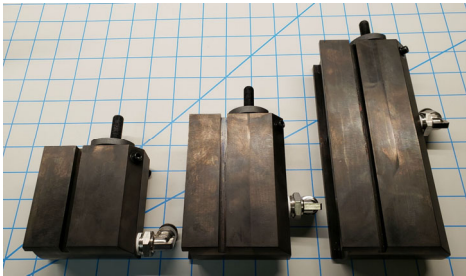
- CK903 KIT, CUES WHEEL ADAPTER
- FITS ALL CPR & SPR WHEELS FOR 8" AND GREATER
- ADAPTER ADDS 1-3/16" SPACING PER SIDE
- INCLUDES: HW4794, SCREW, FLAT, 1/4-20X1.25, SKT, A286SST



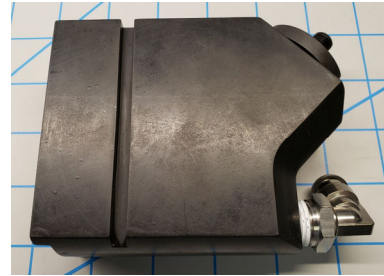
- CK321 KIT, AIR MOTOR SET, COLLET STYLE
- CONTAINS: CK303, CK338, CK307



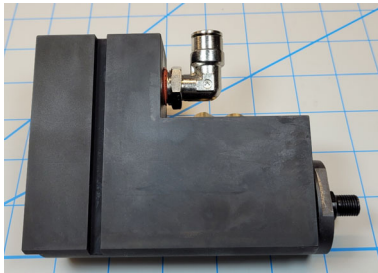
- CK322 KIT, AIR MOTOR SET, SHAFT STYLE
- CONTAINS: CK303-1, CK306-1, CK307-1, CK195



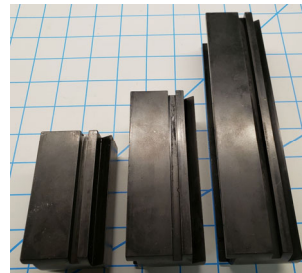
- CK323 KIT, AIR MOTOR SET, XL SHAFT STYLE
- CONTAINS: CK303-2, CK306-2, CK307-2



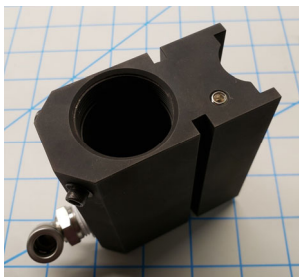
- CK325 ASSEMBLY, AIR MOTOR, 45 ANGLE



- CK331 ASSY, AIR MOTOR, FWD FACING
- FOR USE WITH DUAL FORWARD FACING CAMERA SYSTEM, P/N TBD



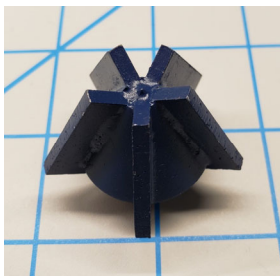
- CK324 KIT, KANGAROO CLAMP ADAPTER SET
- CONTAINS: CK308, CK309, CK310



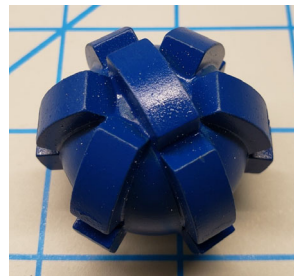
- SPARE AIR MOTOR HOUSING ASSEMBLY
- 3.5" = CK303-3; 4" = CK338-3; 4.5" = CK306-3; 7.5" = CK307-3



- CK195 EXTENSION SHAFT, AIRMTR, 3/8-24, 1"



- CK047 BIT,DIAMND,CONE,1.6DIA,30DEG,3/8-24
- 3/8-24 THD
- RECOMMENDED FOR GENERAL USE SUCH AS CIPP, PVC, ROOTS, ETC
- WITHSTANDS CONCRETE, VCP, AND CAST IRON



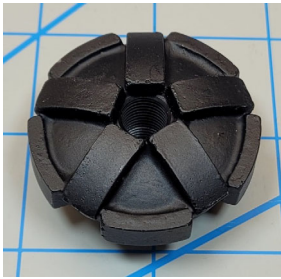
- CK242 BIT,DIAMND,BALL,40 MM DIA,3/8-24
- 3/8-24 THD
- RECOMMENDED FOR CONCRETE, VCP, AND CAST IRON



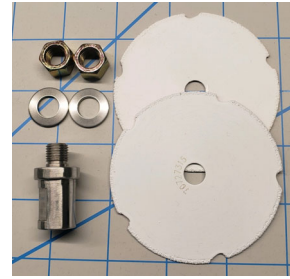
- CK247 BIT,DIAMND,CONE,1.6DIA,25DEG,3/8-24
- 3/8-24 THD
- RECOMMENDED FOR CAST IRON



- CK234 BIT,CARBIDE,DOME,16G,1.38DIA,3/8-24
- 3/8-24 THD
- RECOMMENDED FOR GENERAL USE SUCH AS CIPP, PVC, ETC
- WITHSTANDS LIGHT CONCRETE, VCP, AND CAST IRON



- CK293 BIT, DIAMOND, CIRC, 1.7 DIA, 3/8-24 3/8-24 THD
- FOR FORWARD FACING AIR MOTOR



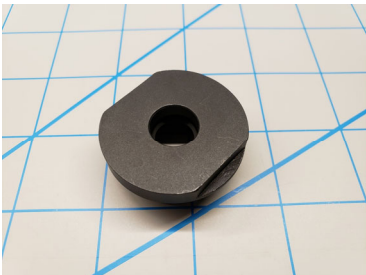
- CK355 KIT, SAW BLADE ARBOR, 3/8-24
- 3/8-24 THD
- RECOMMENDED FOR REBAR AND OTHER METALS



- CK196 ROUTER, CARBIDE, BURR, 1/4" OD, 2.5" L
- 1/4 DIA



- CK203 WHL BRUSH, 3.25 DIA, 1/4 SHANK, .014 WIRE
- 1/4 DIA



- CK177 RETAINING NUT, AIR MOTOR CARTRIDGE



- CK353-2 AIR MOTOR CARTRIDGE, 1/4" COLLET



• CK353 AIR MOTOR CARTRIDGE, 3/8-24 SHAFT



• CK353-1 AIR MOTOR CARTRIDGE, XL 3/8-24 SHFT



• CK318 KIT, SERVICE KIT, AIR MOTOR



• CK161 1/4" COLLET SHAFT, AIR MOTOR



• CK164 COLLET NUT, AIR MOTOR



• CK162 3/8-24 SHAFT, AIR MOTOR





- CK163 XL 3/8-24 SHAFT, AIR MOTOR



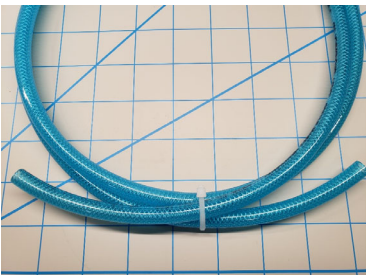
- HW4818 WRENCH, OPEN END, THIN, 7/16"



- HW4819 WRENCH, OPEN END, THIN, 5/8"



- CK900 KIT, TOOL, CURRAHEE
- NOT ALL TOOLS AND FLUIDS SHOWN



- KC141 AIR MOTOR HOSE
- PURCHASE BY THE FOOT



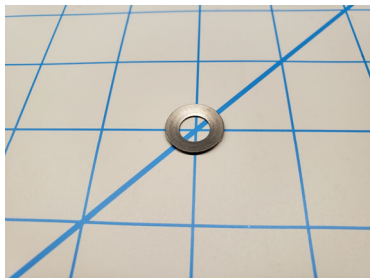
- CK258 FITTING, ELBOW, 3/8 NPT, 3/8 TUBE, NPBRs
- AIR MOTOR SIDE



- CK257 FITTING, ELBOW, 1/4NPT, 3/8TUBE, NPBR
- TRANSPORTER SIDE



- HW5113 SCREW, SHLDR, 5/16X5/16X1/4-20, 17-4
- FOR CAMERA MOUNT



- HW4691 SPRING, BELL, .317IDX.625ODX.042, SST
- FOR CAMERA MOUNT



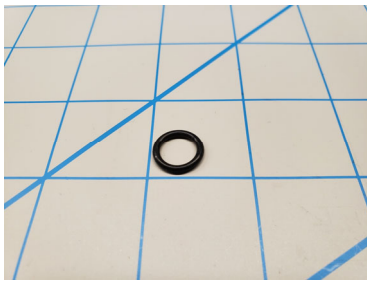
- CK217 SPACER, CAMERA BRACKET ASSEMBLY
- FOR CAMERA MOUNT



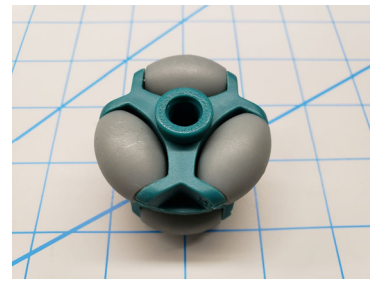
- CK123 GASKET, CONNECTOR, 2-PIN
- USE WITH CS012 GREASE, ELEC. INSUL. #4



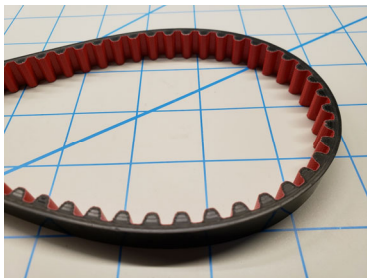
- HW4797 O-RING, 10MM ID X 1.3MM, BUNA-N
- AIR PIPE SEAL
- USE WITH CS390 LUBE, ORING, SUPER O LUBE, 2GM PKT



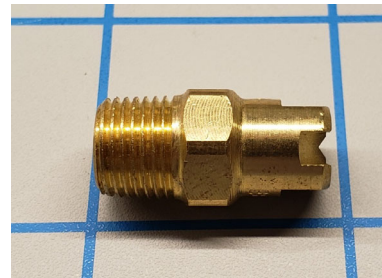
- HW1092 O-RING,2-012,BUNA-N
- WATER PIPE SEAL
- USE WITH CS390 LUBE,ORING, SUPER O LUBE,2GM PKT



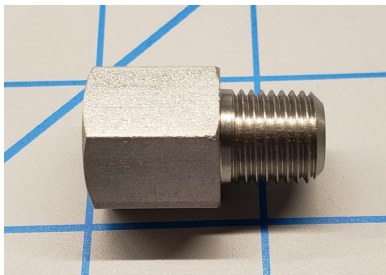
- HW4816 OMNI WHEEL,48MM DIAx40MMx8.3MM BORE



- CK088 BELT, 8M, 12MM WIDTH, 1000MM LNG



- HW4886 NOZZLE,30DG FLAT SPRAY,1/8NPT,BRASS



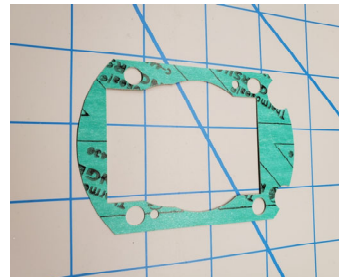
- HW4860 VALVE,CHECK,15PSI,1/4MNPT-FNPT,SST



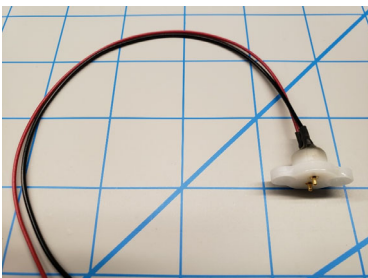
- CK174 HOSE, AIR, .5 X 12 IN



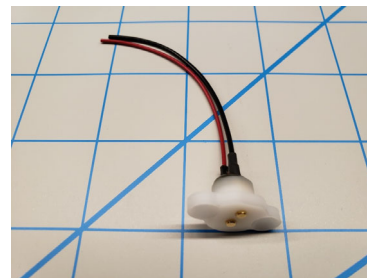
- CK175 HOSE, WATER, .25 X 12 IN



- CK080 GASKET, BODY, CK600
- USE WITH CS642 MARINE GREASE, LUCAS OIL



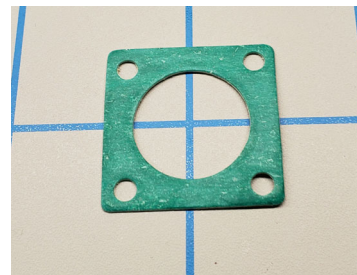
- CK311 CONNECTOR, UP/DWN, POGO
- USE WITH 420802 GOOP, AUTOMOTIVE 3.7 OZ TUBE



- CK312 CONNECTOR, UP/DWN, PAD
- USE WITH 420802 GOOP, AUTOMOTIVE 3.7 OZ TUBE



- EC3453 CONN RCPT FEMALE 6POS SOLDER CUP



- CK024 GASKET, CONNECTOR, CAMERA
- USE WITH CS671 GASKET SEALANT, HYLOMR BLUE, 100G

## CUES RECORD OF REVISIONS

This Record of Revision page is designed to allow the manual user to determine the engineering/manufacturing level to which the manual is written. As engineering changes to this hardware are made at CUES, necessary information in the manual will be revised to reflect those changes. The latest change level and the rationale for any change(s) will be explained in tabular format on this page to allow the manual user to be better equipped should the need arise to call CUES regarding technical information.

Original Manual	Revision	Change Description
CK952	01.23.2020	Preliminary release
CK952	06.04.2020	Edited motors, bits, etc.
CK952	07.13.2020	Added arbor & bit; chgd fittings
CK952	12.11.2020	Added limiter, changed 3" whls
CK952	07.13.2021	Added whl screws, chged 3" whls
CK952	02.16.2022	Edited CK174,175,293,331,HW5113



Innovation for over

50  
*Years*

CUES is the world's leading manufacturer of closed circuit television video (CCTV) inspection, rehabilitation, pipe profiling equipment and asset inspection/decision support software. For over 50 years, CUES has provided innovative pipeline inspection technology and solutions to enable accurate condition assessment and proactive maintenance programs for buried infrastructure.

In addition to inspection equipment, CUES also designs, manufactures, and sells a broad range of pipeline rehabilitation and profiling equipment. These include chemical grouting systems for sewer line pipe joints capable of using a wide variety of grouting products. CUES also makes lateral reinstatement cutting systems which enable the reinstating of laterals in mainline sewers after they have been relined with any of a wide variety of liner materials. Pipe profiling is accomplished via Laser for Sonar based systems.

CUES has the most locations and dealers available to serve you! To find a local CUES facility, find the operating hours for a particular location, or to contact us at your most convenient stocking location, please log onto our website at [www.cuesinc.com](http://www.cuesinc.com) or call the CUES Corporate Headquarters in Orlando, Florida for more information.