

"The Standard of the Industry"



Document Number:

SF940-INST

Description:

INSTRUCTION SHEET

CATVS ON SPR HD TERMINATION

Signature: *Karla Caraballo* CHKR

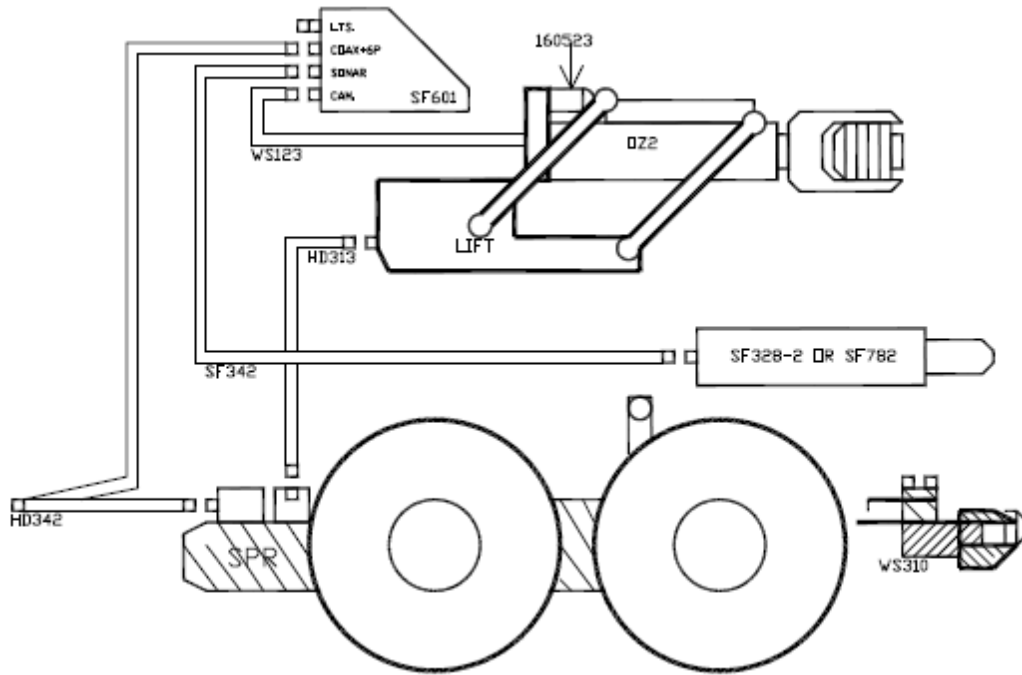
Signature: *Tony Winiewicz* ENGR

Signature: *Pal* MFG

ECN: _____ Revision: -

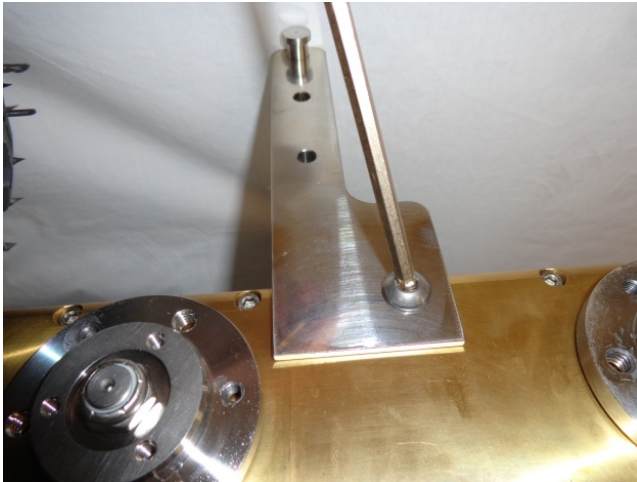






CABLING DIAGRAM

SF940 CATVS PR SPR DUC TRUCK KIT BOM			
ITEM	QTY	DESCRIPTION	CUES P/N
1	1	ELEC ENCL,DWNHL,ANLG TV/SNR,SNG CBL	SF601
2	1	CABLE ASSY,CATVS TX TO M.E. SONAR	SF342
3	1	SONAR ASSY,PR/SPR DROP-IN	WS310
4	1	Y ELIMINATOR,90° W/TAP,PR,NO LIFT	WS123
5	1	CABLE ASSY,PR/SPR>PWR LIFT F/HD CAM	HD313
6	1	ADAPTER,HD12>CATVS,STRAIGHT,32"	HD342
7	1	DUMMY PLUG,2-PIN MALE	160523
8	10	CLAMP,CABLE NYLON 3/8ID	121003
9	10	SCREW,PAN,10-32X3/8 SST	103031
10	2	SCREW,CAPSKT,10-32X.75,SCS BLK	HW925
11	10	MRO-TIE,CABLE,3/16"X14" BLACK	440302
12	2	SCREW,BUTTON HD SKT,/16-18X1/2,SS	HW918
999	1	INST,CATVS,SPR,HD TERMINATION	SF940-INST



- 1- INSTALL BOTH LIFT BRACKETS (INCLUDED IN WS310 ASSEMBLY) USING HW918 SCREWS.
- 2- INSTALL PNEUMATIC WHEELS. **ON BRAND NEW UNITS, THESE HOLES ARE PLUGGED WITH SET SCREWS WHICH NEED TO BE REMOVED IN ORDER TO INSTALL BRACKETS.**

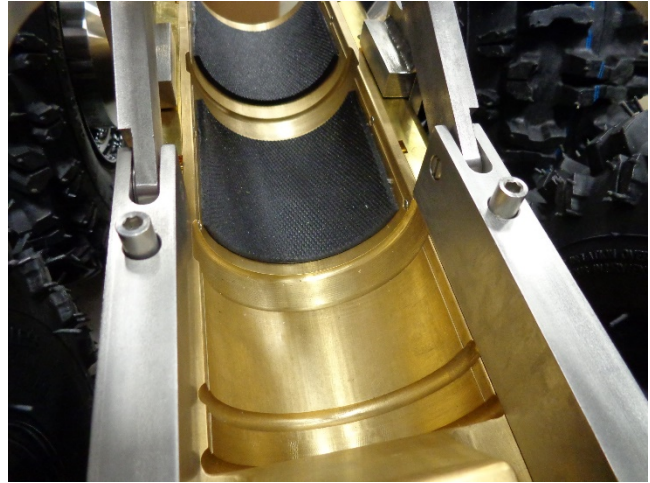


- 3- REMOVE Y ELIMINATOR CABLE FROM THE ELECTRIC LIFT AND REMOVE ITS CABLE CLAMPS.

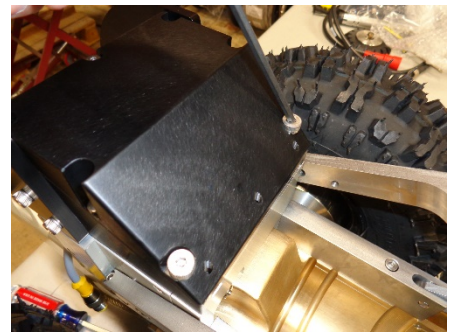
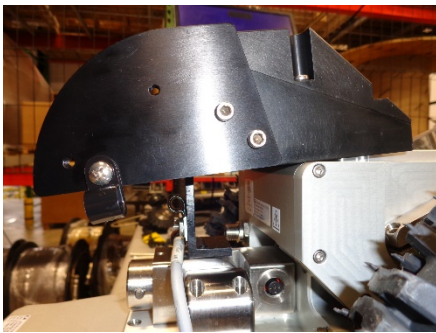


- 4- INSTALL THE HD313 LIFT CABLE ON THE LOWER CABLE CLAMP ON THE BACK OF THE SF601 TRANSMITTER.

- 5- LOOSEN THE TWO SCREWS ON THE REAR BRACKET.



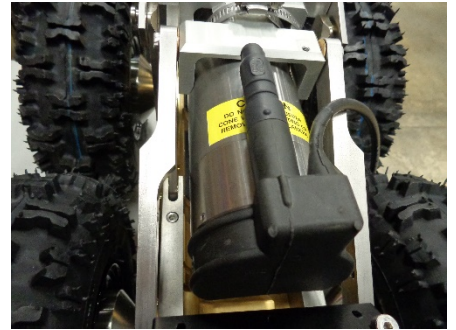
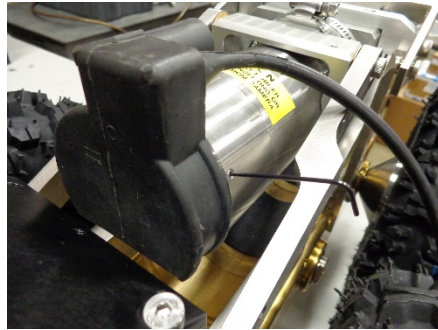
- 6- PLACE THE LIFT ON THE PIPERANGER ALIGNED WITH ITS MOUNTING.
7- LOOSELY INSTALL THE LIFT'S SHORTER TWO FRONT BOLTS.



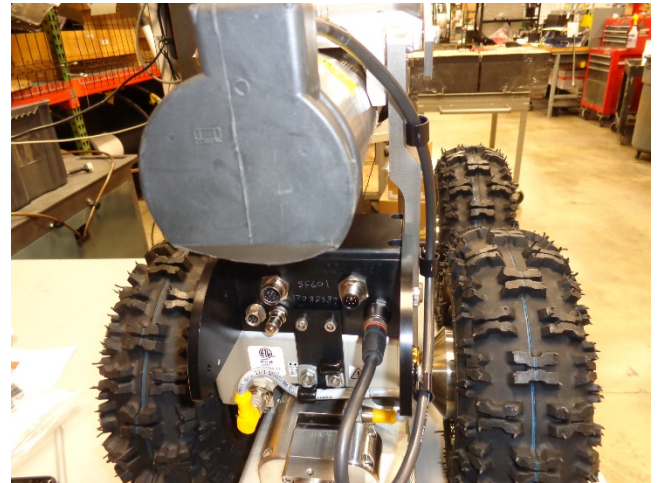
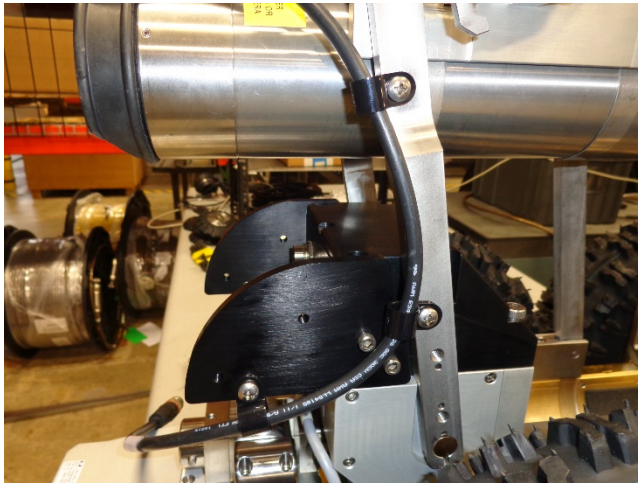
- 8- PLACE AND SLIDE THE TRANSMITTER ON THE SPR LIFT.
9- INSTALL THE TWO LONG FRONT TRANSMITTER BOLTS THROUGH THE LIFT AND TIGHTEN THEM.
10- TIGHTEN THE TWO FRONT LIFT BOLTS.



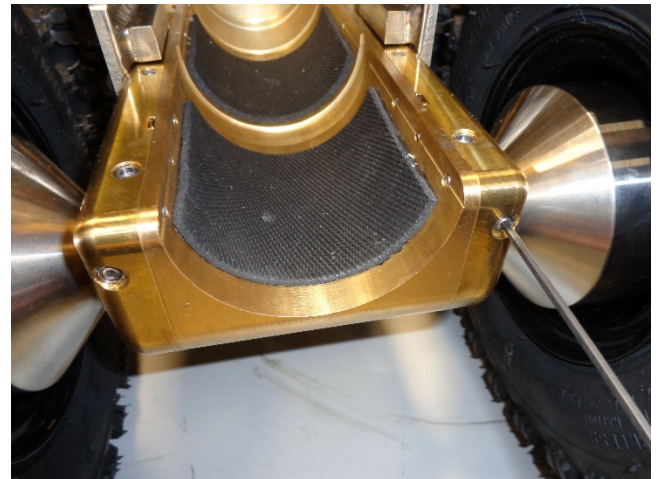
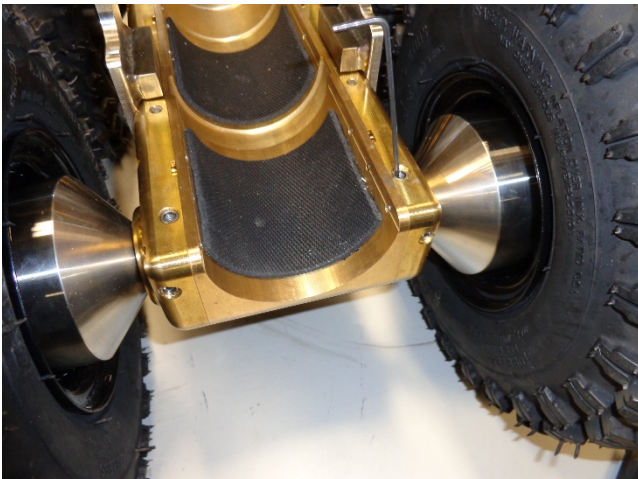
- 11- TIGHTEN THE TRANSMITTER'S TWO REAR SCREWS.
12- CONNECT THE HD313 CABLE TO THE LIFT.
13- CONNECT THE HD313 CABLE TO THE SPR.



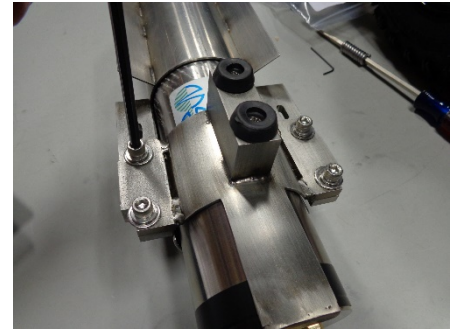
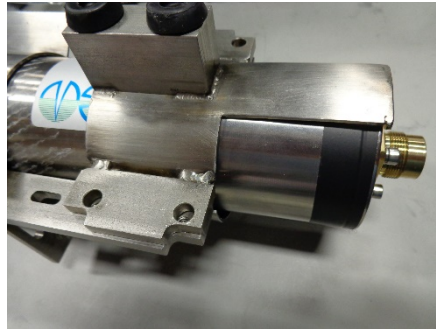
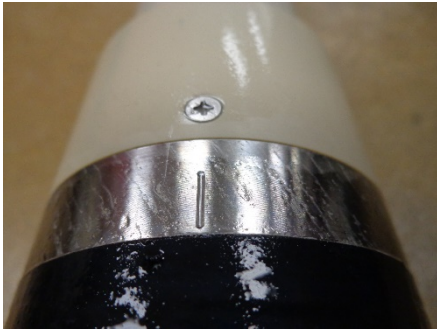
- 14- LOOSEN THE LIFT'S HOSE CLAMPS.
- 15- INSERT THE CAMERA ON THE LIFT, WITH THE ALIGNMENT NOTCH IN THE UP POSITION.
- 16- INSTALL THE Y-ELIMINATOR WS123 AND INSTALL THE THREE RETAINING CAMERA SET SCREWS.
- 18- INSTALL THE 2 PIN DUMMY PLUG 160523 ON THE Y ELIMINATOR IF NOT USING EXTERNAL LIGHTS.
- 19- MAKING SURE THAT THE CAMERA CLEARS THE TRANSMITTER WHEN THE LIFT IS OPERATED, ALIGN THE CAMERA UPRIGHT AND TIGHTEN THE TWO HOSE CLAMPS.



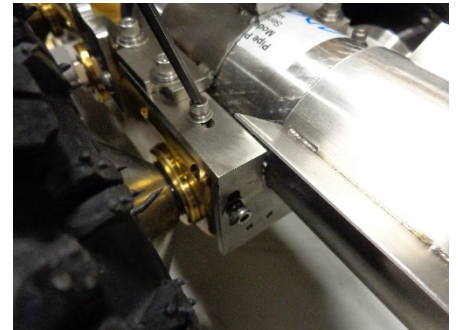
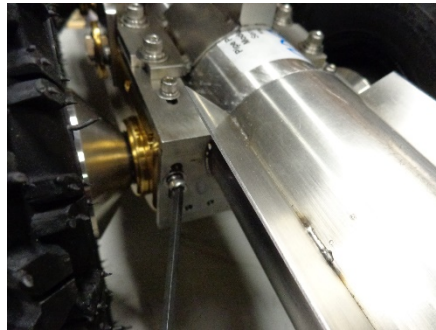
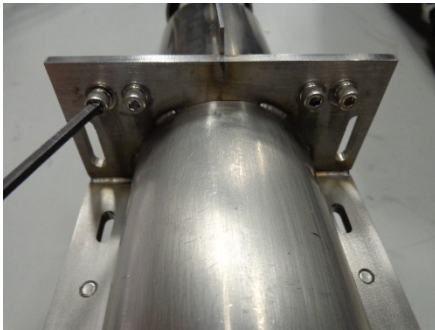
- 20- INSTALL THREE CABLE CLAMPS 121003 USING SCREWS 103031 AS SHOWN.
- 21- CONNECT THE Y-ELIMINATOR TO THE CAMERA CONNECTOR ON THE TRANSMITTER.



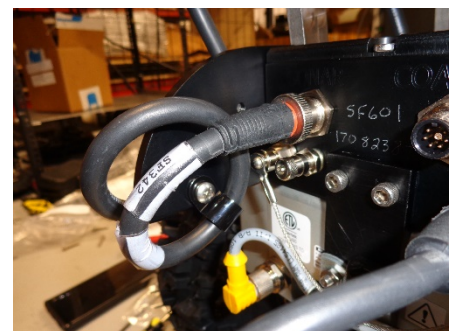
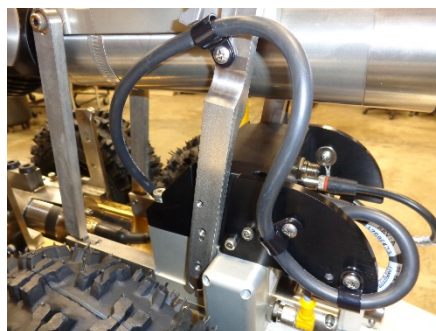
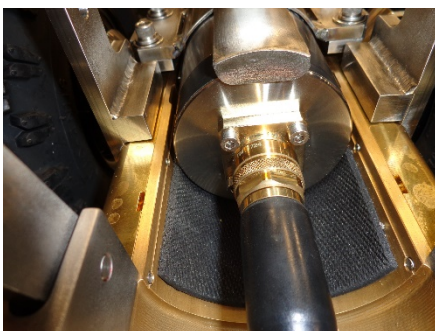
- 22- REMOVE THE FOUR FRONT SET SCREWS IN THE FRONT OF THE SPR.



- 23- INSTALL THE SONAR HEAD UPRIGHT ON THE SONAR GUARD WS310.
- 24- TIGHTEN SCREWS.



- 25- REMOVE THE FOUR SCREWS AND WASHERS FROM THE SONAR GUARD.
- 26- PLACE SONAR GUARD ON TRANSPORTER CRADLE.
- 27- INSTALL THE FOUR MOUNTING SCREWS AND WASHERS TIGHTENING THE FRONT SCREWS FIRST.



- 28- SECURELY CONNECT THE SF342 CABLE TO THE SONAR HEAD.
- 29- INSTALL THREE CABLE CLAMPS 121003 USING SCREWS 103031 TO SECURE THE SONAR CABLE AS SHOWN.
- 30- LOOP THE SONAR CABLE AND ADD A FOURTH CABLE CLAMP AS SHOWN.
- 31- CONNECT THE SONAR CABLE TO THE TRANSMITTER.



- 32- PLUG THE HD342 CABLE TO THE TRANSPORTER 12 PIN CONNECTOR.
- 33- INSTALL THE TRANSPORTER CABLE CLAMP ON HD342 CABLE AND TIGHTEN IT.
- 34- INSTALL THE SCREW HW925 ON THE HD342 CABLE STRAIN RELIEF BLOCK.
- 35- TIGHTEN THE STRAIN RELIEF BLOCK SCREW TO THE TRANSMITTER'S RIGHT WING.
- 36- LOOP THE HD342 CABLE AS SHOWN AND CONNECT IT TO THE TRANSMITTER.

