



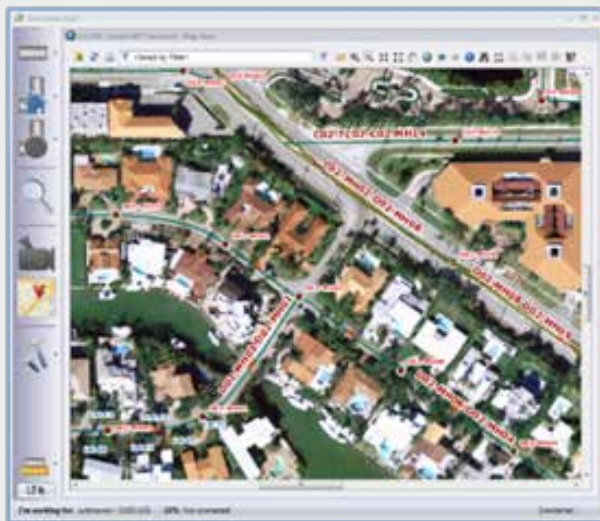
## THE GRANITENET ESRI INTERFACE AND ESRI IMPORT MODULES

### Mapping Operations with the ESRI Interface Module

- Link Water/Wastewater data to an overall GIS strategy. For example, inspections and observations can be displayed along the map lines.
- Import GIS assets (mainlines, lateral, and nodes) to be displayed in GraniteNet's 'Navigator' tree for easy browsing.
- Export asset data and coordinates of any point or line type from the GraniteNet database to the corresponding layers in ArcGIS for review and acceptance.
- Display map document files that were created in ArcGIS.
- Use the Map View pane in GraniteNet to select the features that were imported with a simple mouse-click.
- Click on an asset in the Navigator and zoom to the corresponding asset that will be highlighted on the map.
- Retrieve main or lateral asset's information and recently completed surveys by selecting an object in the map.
- Select a defect from an inspection on the map and zoom to that inspection's observation defect in the Navigator.
- Select features on the map and generate new projects and schedule inspections for the Main, Lateral, and/or Node Assets.
- Create quick filters to search for and select specific assets, attributes, inspections, and/or observations.
- Use the included ArcGIS-styled tools like "Identify", "Measure", and "Find".
- Estimate the GPS coordinates for Laterals, or any other Observation's GPS coordinates.
- Copy GPS coordinates by clicking on a location on the map.
- Support MXD (Map Documents) and PMF (Published Map) file types.
- Link to Google Maps for easy routing directions to the next job site by clicking directly on the map (requires internet access).
- An optional GPS Collection Module is available to work in conjunction with the ESRI Interface Module to record observation coordinates in GraniteNet using the NMEA 0183 protocol.

### 3 Easy Steps for working with GIS Data in GraniteNet

- 1 Simply import asset information from ArcGIS to GraniteNet using the integration module's wizard.
- 2 Next, display, create, and update projects/assets/inspections using the ESRI Interface module.
- 3 Finally, export updated asset, inspection, and scoring information from GraniteNet to ArcGIS.



## GraniteNet, GIS Mapping, Infrastructure Management, and what it can do for you!

Developed by CUES, GraniteNet is a comprehensive condition assessment software solution for managing infrastructure assets that offers a flexible bi-directional interface to ESRI ArcGIS mapping products!

The GraniteNet ESRI Interface Module allows users to view, search, and access assets located within GIS maps to perform inspections, review coordinates, print reports, and find the most recent surveys. Collected data, such as specific asset attributes, condition scores, and observations can be integrated back into the ESRI GIS maps for a synchronized view of the state of the asset.

The module helps municipalities and contractors meet GASB 34/CMOM regulatory requirements by enabling a proactive maintenance management program that's fully integrated into ArcGIS. It saves time, money, and reduces the risk of typographic errors because asset information (IDs and attributes) can be preloaded via the ESRI Import Module to enable field operators to use information exactly as it exists in GIS (assets do not have to be created by hand). Also with the optional GPS Collection Module users can accurately locate, map, create, and document infrastructure in a precise, cost-effective way.

The GraniteNet ESRI Interface Module is compatible with ArcGIS versions starting at 10.0.

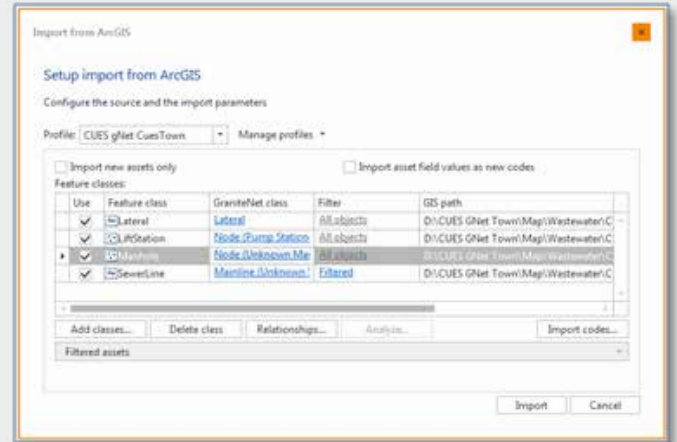
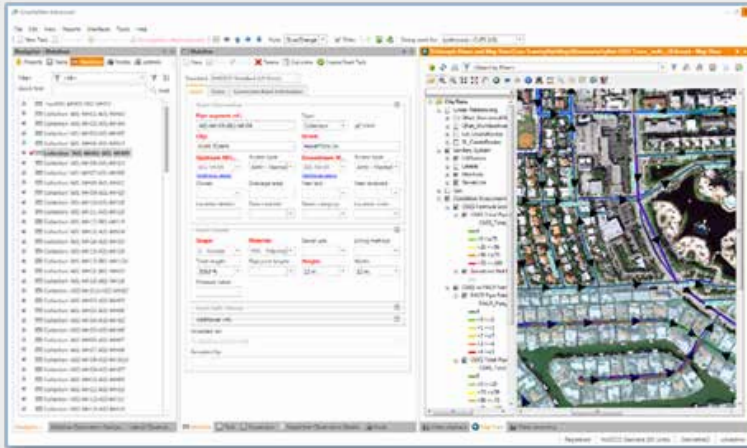


### Contact:

CUES Software Division  
800.327.7791  
gxpinfo@cuesinc.com  
www.cuesinc.com

# ESRI IMPORT MODULE BENEFITS & FEATURES

Synchronize your GraniteNet asset data with ESRI ArcGIS and vice-versa



For ease-of-use, the GraniteNet ESRI Import Module includes a unique synchronization wizard that's designed to import feature classes, asset data of any point or line type, and coordinates from ArcGIS to GraniteNet.

Create field mapping rules between the ArcGIS and GraniteNet data to specify only the specific information you wish to exchange.

# GPS COLLECTION MODULE BENEFITS & FEATURES

The ESRI Interface Module supports GPS devices with the optional GPS Collection Module and provides the ability to obtain the current coordinates of a Node, Lateral, or Observation in two different ways:

- By connecting the GPS receiver directly to the computer
- By Entering the GPS coordinates manually

The GPS Collection Module works with the pipeline data acquisition system, ESRI Interface Module, and TV inspection system to perform numerous beneficial operations:

- Connects to the GPS receiver device, extracts the current coordinates, and shares the information with Node, Lateral, or Observation screens.
- The GraniteNet GPS module supports the NMEA-0183 protocol compatible GPS receivers working through the COM (RS-232) hardware interface.
- Display and obtain the current GPS coordinate(s) for the following objects:
  - o the single coordinate of a Node
  - o two coordinates (end points) of the Lateral Asset's connection and end points
  - o the single coordinate of a specific observation
- The toolbar displays the current state (accuracy parameters) and coordinate that's transmitted by the GPS receiver.

GPS

GPS: Connected Fix: GPS SATS: 4 ASNR: 25.75 HDOP: 2.8 PDOP: 1.4 28°33.79702'N / 081°52.51215'W / 78m

## WITH THE GRANITENET ESRI ARCGIS IMPORT/EXPORT WIZARD, SELECT THE ARCGIS SOURCE, FILTERS, AND FEATURES BASED ON YOUR NEEDS!

### Importing Assets from ArcGIS to GraniteNet

The Import from ArcGIS synchronization option transfers the following information to GraniteNet:

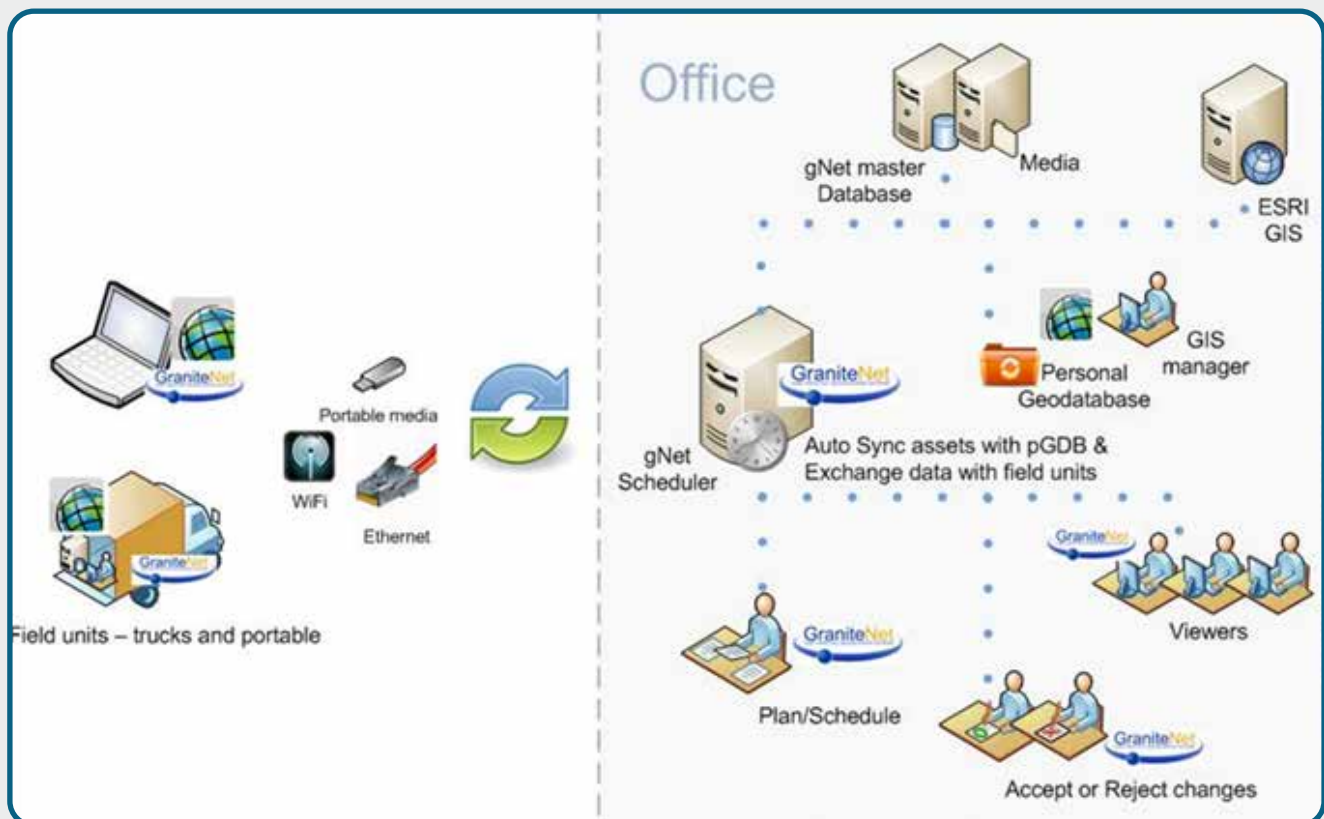
- Selected Main assets, Lateral Assets and the related upstream and downstream Node data.
- The assets include geographic coordinate information that links them to the maps.

If the asset does not exist in the GraniteNet database, a new asset is created. If the asset already exists in the database, the asset is updated with the new properties and coordinates based on the import profile's mapped properties.

### Exporting Assets from GraniteNet to ArcGIS

The Export Assets to ArcGIS synchronization option exports the selected Main assets and the related upstream and downstream Nodes and Lateral assets. The following asset information can be exported to ArcGIS from GraniteNet:

- Attached Assets – assets that were imported from GIS or previously exported to GIS that already have an ArcGIS ID.
- Unattached Assets – assets that were created (including coordinates) “in the field” in GraniteNet that do not already have an ArcGIS ID. A new asset is created in the corresponding GIS based on the GraniteNet properties.



*To see how the CUES GraniteNet ESRI Interface Module, ESRI Import Module, and GPS Collection Module can work for your organization to streamline processes, drive down costs, and gain efficiencies, ask your CUES Sales Representative to set up an online software demonstration and discussion or email [granitesupport@cuesinc.com](mailto:granitesupport@cuesinc.com) today!*