

PEARPOINT®

flexitrax™ P550c

Comprehensive. Convenient. Connected.

Portable video inspection for drainage, water and plumbing networks



SPX®

Portable, modular pipeline inspection – designed with you in mind

Inspect pipes faster to complete more surveys each day

- The intuitive interface is quick to set up and simple to operate.
- Dedicated function keys make it easy to use.
- Built-in rechargeable batteries lasting all day.

Stay connected

Reports are ready to share as soon as your survey is complete.

- WiFi connection for sending reports via DropBox or email.
- Advanced connectivity with USB, HDMI and ethernet, making it easy to view and export your data.
- Video streaming to nearby devices.

A suite of reporting formats

Expand your client base by offering a variety of tailored surveys through;

- MSCC3, 4 & 5 compliant reports.
- WinCan compatible files.
- Basic reports.

Customised solutions

- Modular by design, the flexitrax P550c system can be paired with a range of products and accessories.
- Our solution gives you flexibility when you need it, enabling you to survey pipes from 1¼"/32mm to 60"/1500mm.



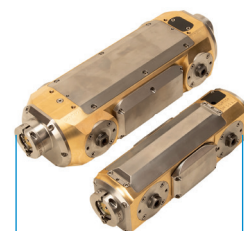
Crawlers

The two crawlers enable you to center your camera across a wide range of pipe sizes.



Auxiliary lighthouse
for additional light in
large or dark pipes

Built-in multi
frequency sonde



P356 crawler
Center in pipes
from 6"/150mm
to 60"/1500mm

P354 crawler
Center in pipes
from 4"/100mm
to 12"/305mm

flexitrax P550c controller

Alerts for WiFi and battery status

High resolution
12.1"/307mm screen



Convenient
cable-tidy
hooks

Connectivity: USB, HDMI,
WiFi, ethernet, audio
and analog video in



Fingertip control of
drum/crawler/camera/light
with joysticks and
control buttons

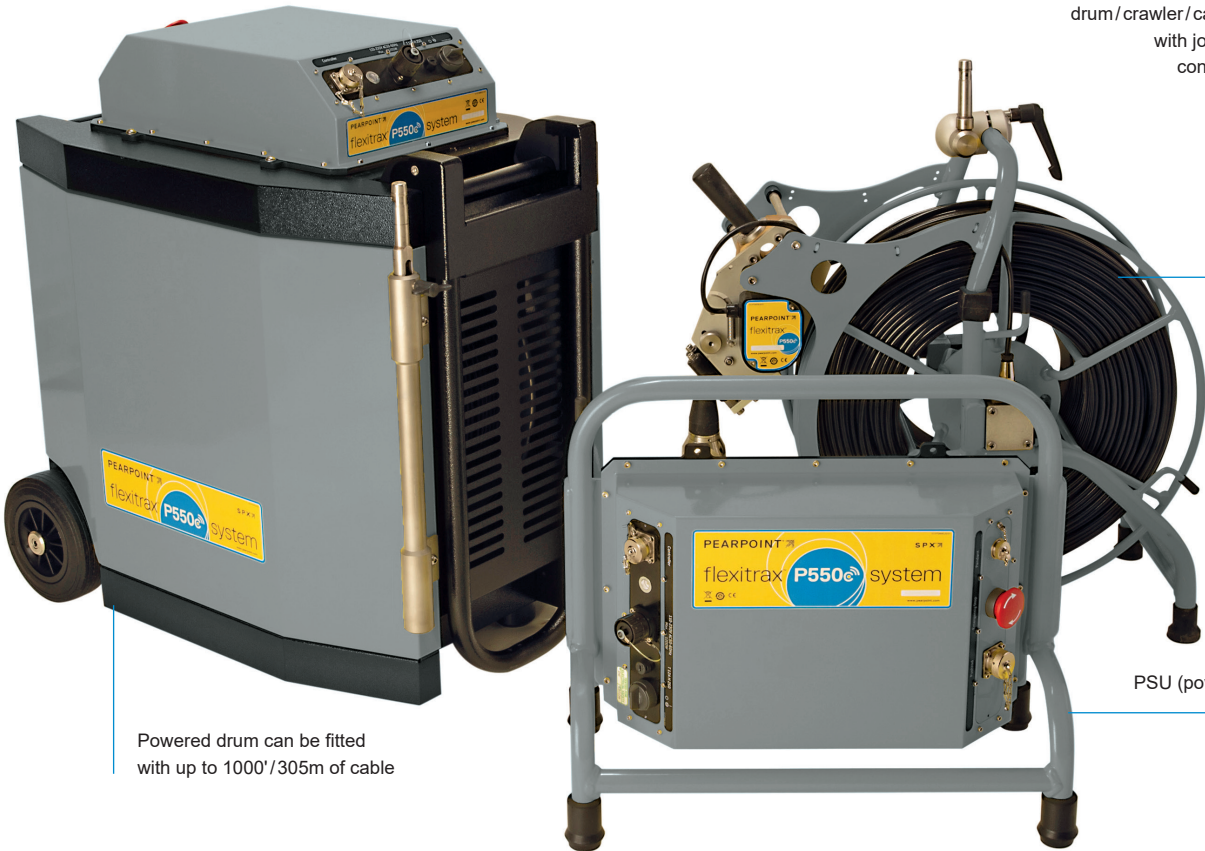
IP55 ingress
protection open
and closed

Onboard
user manual

Regional keyboard
layouts available

Dedicated buttons for
shortcuts to commonly
used functions

Drums



Powered drum can be fitted
with up to 1000'/305m of cable

Manual drum

If you need a more
portable solution, the
manual drum can help
you reach access
points beyond the
range of your vehicle

Manual drum can
be fitted with up to
1000'/305m of cable

PSU (power supply) for manual drum



Easier



Faster



Simpler

Easier. Faster. Simpler.

The flexitrac P550c is designed around simplicity of operation. Ready to use in 30 seconds from powering on, requires minimal training to operate, and an onboard comprehensive user manual, letting you concentrate on pipe inspection.

A large 12.1"/307mm HD, daylight visible screen combined with full-size keyboard and dedicated function keys guide you through the survey process, making the system faster and easier to use.

Built in is a high capacity internal lithium-ion battery, providing power for up to a full day's typical usage (push rod only), and 128Gb of solid state memory, sufficient for over 90 hours of video recording.

Tailored solutions

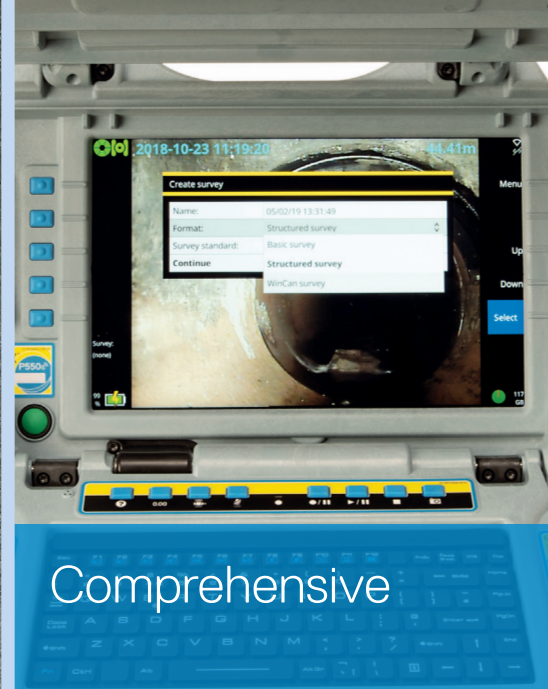
This portable and modular crawler system enables operators to customise the flexitrac P550c solution for the inspection of a vast range of pipes, in all locations.

The flexitrac P550c can be readily transported and easily wheeled onto site through our rugged, ergonomic design, allowing you to reach access points beyond the range of your vehicle.



Survey an extensive range of pipes

Survey pipes as small as 1.5"/38mm or as large as 60"/1500mm.



Reporting

The flexitrac P550c has complete on-board reporting capabilities and connectivity, quickly delivering content-rich survey reports to you and your customers. Creating a comprehensive report is quick and easy;

1 Choose the reporting template

Use customisable report templates for each occasion; including the Water Research Council's MSCC3, 4 and 5 condition codes and WinCan compatible file formats.

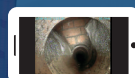
2 Complete the survey

Enter your survey details using a tactile, full-size keyboard. Dedicated and context-sensitive function buttons guide you through the survey process.

3 Distribute the report

Share reports, images and video as soon as your survey is complete via DropBox or email*. Alternatively you can export a report to a USB stick or stream videos to a nearby device.

(*WiFi access point required, such as mobile phone, tablet or dongle)



Connected

Accessories and Options

When building your flexitrax P550c solution, centering your camera in the middle of the pipe is key. Once the drum and crawler system have been chosen, enhance your pipeline inspection capabilities by incorporating our expert range of accessories to meet the demands of the various pipes you are working in.

Wheels

Select from a range of small, medium or large wheels and/or spacers to suit your pipe size and terrain.



Elevators

Both manual and powered elevators are available, for centered inspection up to 36"/900mm.



Other accessories are available.

Pushrods

A choice of pushrod reels of varying length and flexibility can be connected to the flexitrax P550c system. Use a pushrod to survey pipes as small as 1.5"/38mm.



Cameras

Choose from three camera models; Forward view only, Pan and Tilt or Pan and Tilt, with 10 x optical zoom.



Cradle

Combine the cradle and elevator together with the large crawler for centered inspection up to 60"/1500mm.



Locator

Both the crawlers have built in multi frequency sondes enabling you to use a suitable locator to pinpoint the crawler's location. The RD7200 is an ideal tool for this and locates 4 sonde frequencies.

Guidance mode helps you trace your target with user-friendly visual and audio guides, while Peak+ mode with Guidance Arrows specifically target the needs of CCTV inspection system users.



The flexitrax P550c crawler system is fully compatible with Pearpoint's flexiprobe™ P540, P340 and P350 range.

Specifications

flexitrax P550c	
Battery capacity	Internal Li-Ion Battery (4S2P) - 14.68V, 6.4Ah (93.95Wh)
Battery run-time	Up to one day's typical usage, 7.5hrs view only/5hrs continuous recording (battery only supports push rod usage)*
Cameras	Forward View with 120 Lumen LEDs Pan/Tilt with 210 Lumen LEDs Pan, Tilt and 10 x optical Zoom with 420 Lumen LEDs
Connectivity	USB 2.0 (x3), HDMI video out, analog video in (PAL/NTSC), headphones out, microphone in, rod/camera/drum connectivity and 802.11 b/g/n WiFi
Construction	High impact ABS and powder-coated, zinc-plated mild steel
Controllers	flexitrax P550c command module with integrated joysticks to control the camera and crawler Optional pendant controller for deployment phase
Dimensions	17.5" x 15.2" x 6.1"/445mm x 385mm x 155mm
Display	12.1"/307mm, 1280 x 800 color LCD
Drums	Manual drum or powered drum, with cable length options from 500' to 1000'/150m to 305m
Environmental Protection	flexitrax P550c controller: IP55 Power supply/charger: IP54 rated for indoor use
Input power requirements	10-30V, 60W
Power sources	Power from drum, external mains PSU or internal battery
Power supply	Mains input 100-240VAC, 50-60Hz, 1.7A DC output 16V, 3.75A, 60W
Recording formats	Video: H.264. Audio: MP3. File format: MP4
Report File Formats	Basic reports, MSCC3 & 4: docx MSCC5: docx or Xml WinCan: Xml Video: MP4 Image: JPEG
Storage	Integral 128Gb and support of USB flash storage
Temperature	Storage: 4°F to 176°F/-20°C to +80°C Operating: 14°F to 122°F/-10°C to +50°C Charging: 32°F to 104°F/0°C to +40°C
Weight	16lb / 7.25 kg
Wheels	Small, medium and large solid rubber and large pneumatic for conventional/silted pipes Rasp wheels for smooth/relined pipes

*May vary depending on power management settings chosen, ambient conditions, accessories attached, recording time and other factors



READY TO GET STARTED

Visit www.pearpoint.com

Visit www.pearpoint.com

Global locations

Radiodetection (USA)

28 Tower Road, Raymond, Maine 04071, USA
Toll Free: +1 (877) 247 3797 Tel: +1 (207) 655 8525 rd.sales.us@spx.com

Pearpoint (USA)

39-740 Garand Lane, Unit B, Palm Desert, CA 92211, USA
Toll Free: +1 800 688 8094 Tel: +1 760 343 7350 pearpoint.sales.us@spx.com

CUES (USA)

3600 Rio Vista Avenue, Orlando, Florida 32805, USA
Toll Free: +1 800 327 7791 salesinfo@cuesinc.com

CUES (Canada)

1675 Sismet Rd. #2, Mississauga, ON. L4W 1P9, Canada
Toll Free: +1 877 297 8957 salesinfo@cuesinc.com

Radiodetection Ltd. (UK)

Western Drive, Bristol, BS14 0AF, UK
Tel: +44 (0) 117 976 7776 rd.sales.uk@spx.com

Radiodetection (France)

13 Grande Rue, 76220, Neuf Marché, France
Tel: +33 (0) 2 32 89 93 60 rd.sales.fr@spx.com

Radiodetection (Benelux)

Industriestraat 11, 7041 GD 's-Heerenberg, Netherlands
Tel: +31 (0) 314 66 47 00 rd.sales.nl@spx.com

Radiodetection (Germany)

Groendahlscher Weg 118, 46446 Emmerich am Rhein, Germany
Tel: +49 (0) 28 51 92 37 20 rd.sales.de@spx.com

Radiodetection (Asia-Pacific)

Room 708, CC Wu Building, 302-308 Hennessy Road, Wan Chai, Hong Kong SAR, China
Tel: +852 2110 8160 rd.sales.asiapacific@spx.com

Radiodetection (China)

Ming Hao Building D304, No. 13 Fuqian Avenue, Tianzhu Town, Shunyi District, Beijing 101312, China
Tel: +86 (0) 10 8416-3372 rd.service.cn@spx.com

Radiodetection (Australia)

Unit H1, 101 Rookwood Road, Yagoona NSW 2199, Australia
Tel: +61 (0) 2 9707 3222 rd.sales.au@spx.com