



CUESrecon

Wireless Pole Camera

Designed to perform inspections and surveys of pipelines, wells, manholes, sewer treatment plants, and all other areas that are difficult to reach without a confined space entry.

WHY CHOOSE THE CUESrecon?

The CUESrecon Pole Camera Inspection System has been engineered to support true 1080p HD video for highly detailed images. This wireless inspection tool features a submersible, self-illuminating 30X Zoom camera, mounted on a carbon fibre telescoping pole with motorised articulation. Images are viewed on a rugged, specially configured 5" / 127mm display that can be pole, chest or wrist-mounted, and transmitted via wired or wireless methods. This portable, system is cost-effective and is ideally suited to increase the safety and efficiency of many inspection operations.

- Fully wireless operation for fast, one-person setup and deployment
- 30X optical zoom for long-distance visual inspection from street level
- True 1080P HD video for highly detailed images of defects and conditions
- IP68 submersible-rated camera built for harsh sewer and storm environments
- 6+ hour rechargeable battery with extra batteries included for all-day operation
- 5" / 127mm rugged display with pole, wrist, or chest mounting options for flexibility
- Telescoping carbon fibre pole with motorised articulation to reach difficult areas safely

Display can be rotated 360° on a magnetic pole-mount for easy viewing.

Product Features:

- 6+ hour rechargeable battery
- Interchangeable cameras and removable side lights
- Dedicated software supports still image and video recording
- View images on multiple displays in proximity
- Full 1080P high resolution video for sharper images
- Handle with integrated system Controls for pan, zoom, illumination, image capture, video record
- Motorised remote camera articulation
- Fully wireless operation for ease-of-use
- Extra batteries supplied for handle and display allows for continuous operation

Recommended Additions:

- 10"/ 254mm rugged tablet display
- Laser Rangefinder
- 22ft / 7m telescoping pole with motorized articulation
- 30ft / 9m telescoping pole with motorized articulation



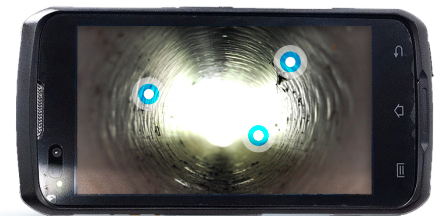
Contact us to arrange a no obligation hands-on demonstration.



Ergonomic handle is easy to hold and operate; built-in controls allow all functions to be operated from handle

Removable display shown on pole-mount, which tilts and rotates

Carbon fiber pole is lightweight and available in 16' / 4.9m, 22' / 6.7m, and 30' / 9.1m lengths



A specially configured 5"/ 127mm display can be mounted on the pole, wrist or chest; system functions can also be controlled from display.

Telescoping pole with motorised articulation

30X Zoom camera shown with 5"/127mm rugged display & two sidelights

Adjustable pole rod fitted with ball foot for support and stability, extends to 3' / 0.9m