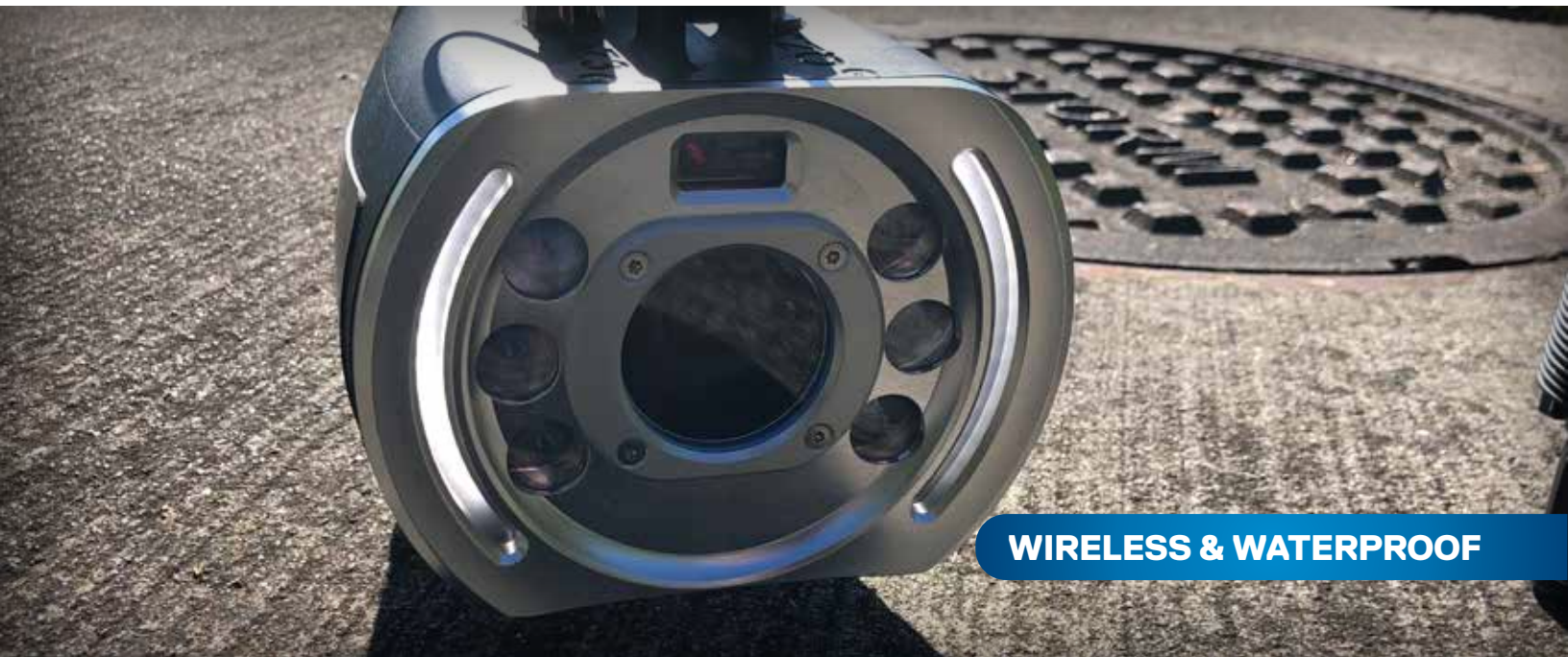


QZ3 ADVANCED

PORTABLE INSPECTION SYSTEM



WIRELESS & WATERPROOF

The QZ3 Advanced is a lightweight, portable, video inspection system that can be operated by one person!

Accomplish safe-viewing in industrial or environmental areas with no man entry. Perform swift inspections and surveys of pipelines, wet wells, manholes, sewer treatment plants, steam generators, tanks, vessels, and other areas that are difficult to reach. QZ3 Advanced features motorized height and tilt adjustments to allow for smooth and precise positioning of the camera head to locate lateral services or to identify a blockage at a manhole, access port, or other entry point without entering the line or structure. QZ3's wireless streaming enables cable-free inspections within the immediate manhole area. For additional range up to 100+ feet from the manhole ask about the Wi-Fi Range Extender accessory!

QZ3 Advanced is mounted on a lightweight carbon fiber adjustable telescopic pole that can extend up to 24' (7m) (optional 34' (10m) pole is available). The QZ3 Advanced on-board laser distance finder allow measurements to within an inch of accuracy (appx. 25mm). Get full HD views of cracks, breaks, pipe separations, scale, and various defect conditions from hundreds of feet away!



The QZ3 Advanced web interface works from any Wi-Fi enabled device with a browser including optional ruggedized tablet.



Tablet can be charged using spare battery in the field with optional DeWalt® USB adapter



Accomplish safe-viewing in industrial or environmental areas with no man entry.

- Image Sensor: 1/2.8-type CMOS
- Lens: 30x optical zoom
- Picture Quality: Full HD 1080p (1920 x 1080)
- Minimum Illumination Color: 0.01 lux
- Digital Zoom: 12x (360x with optical zoom)
- Camera Head Ingress Protection: IP67
- (*Submersible to 1m for <30 min)
- Signal System: 1080p
- Video Output: Digital
- Laser Distance Measurement Range: Up to 200 ft accurate within an inch (Apprx. 60m accurate to +/- 20mm)
- Motorized Height Adjustment for 6"- 72" (152 mm -1829 mm) Pipe
- Motorized Tilt: +/- 30 degrees from horizontal
- Viewing Angle: 63.7° to 2.3°
- Pixels: 2.38 Megapixels
- Battery: Lithium-Ion 4 hrs operation

Simple to use and light weight!

Establish condition assessment priorities.

Electric Tilt and Height Adjustments for Quick, Easy, and Precise Positioning

Integrated Laser Distance Measurements