

MANHOLE Deployment Systems



Boom Arm-Out Position



Deployed Position



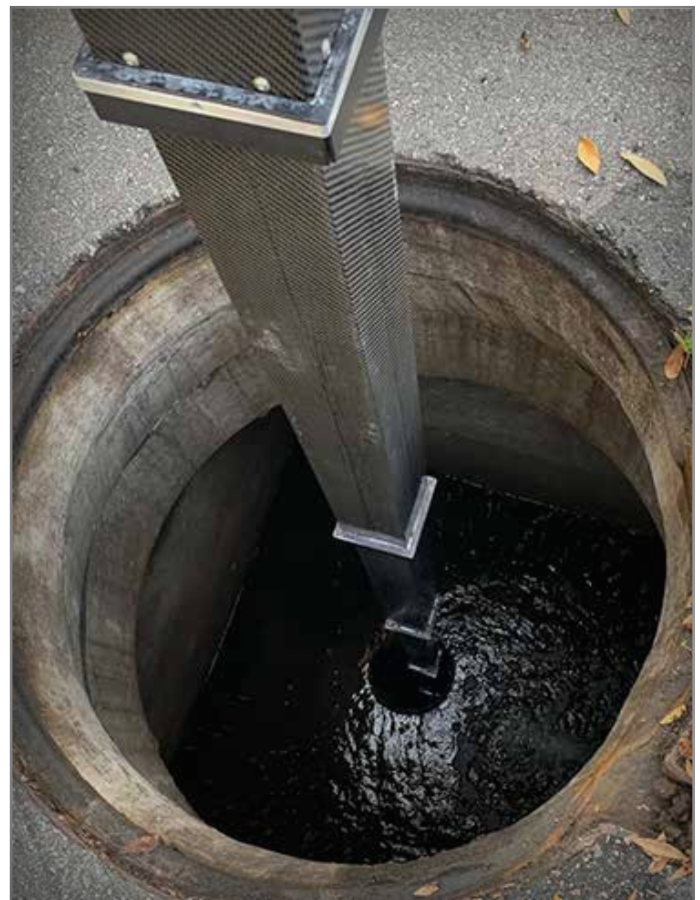
Stowed Position

Crane-Mast Deployment

CUES MAST SYSTEMS

- The truck-mounted mast can position the camera 35' (11 m) below the surface of the road and is designed to achieve optimum picture stability throughout the optical zoom range of the camera.
- The camera unit can be electronically raised and lowered.
- Prevents the need for an operator to enter the manhole to position and/or reposition the camera height.
- Perform manhole & mainline inspections and gauge the manhole depth without the need for a camera transporter!
- Can be installed on existing TV inspection systems without the need for modifications to other existing equipment already installed on the unit.

NOTE: The tripod can reach depths of 75 ft at 5 ft per min down speeds.





Perform manhole & mainline inspections and gauge the manhole depth without the need for a camera transporter!

Tripod Deployment

