

CATVS

COMBINED ANALOG TV & SONAR



TV & SONAR TOGETHER ON A SINGLE CABLE

The CUES CATVS system is a single cable TV & sonar system that transmits both video and sonar on a single multi-conductor cable. This system is designed to work with the optional OZIII-S camera and the Marine Electronics Sonar using a standard CUES gold cable. CATVS is ideal for partially and fully-charged pipelines, including difficult-to-inspect siphons and can be adapted to multiple platforms including: TV/Sonar Float, Sonar-only Float, steerable/non-steerable CUES Pipe Ranger transporters, and the CUES Mudmaster transporter.

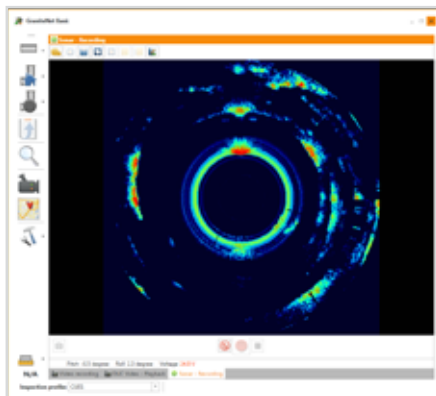
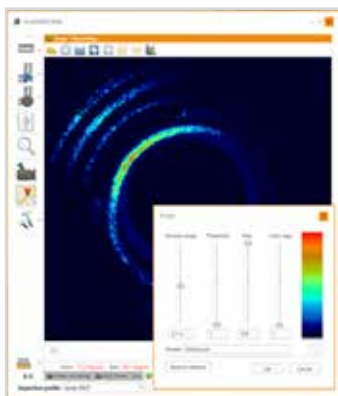


GRANITENET SOFTWARE - SONAR MODULE

Use the GraniteNet Software Sonar Module with the CUES Sonar System to provide dimensional data on silt level, grease accumulation, pipe deformation, offsets, etc., below the waterline during a mainline inspection. Save sonar information digitally to perform measurements, reports, or capture still images in the truck or in the office.

The Sonar Module allows the user to display data in real-time and record it simultaneously with the live video to identify and measure structural and maintenance issues in sewer or storm pipes. Create observations using industry-standard code systems like PACP and automatically link to the right frame of both sonar and video recordings.

Calculate pipe capacity loss as a percentage of the total pipe flow capacity. The thickness of sediment or debris graphically displays the level of sediment along the pipe and estimates the total volume of sediment for removal purposes.



- Perform up to 5000' (1524 m) inspection distances, depending on the equipment configuration.
- Diameter Range: 3' - 20' (1 - 6 m)
- Double your productivity by performing both Sonar and TV inspections in one run.
- A full-size truck is no longer required to perform simultaneous TV/Sonar inspections - only one reel is required.
- Use with the optional OZIII-S camera.
- Configurable with the CUES Base Station. Use your existing TV truck for Sonar work, too! It's quick and easy to retrofit and upgrade most trucks to CATVS. CUES' receiver only requires a single 1U rack opening in the control room for installation, since installation and the receiver is plug and play with only a few adapter cables.
- Bolt-on upgrades to your existing transporter and float make for a simple and efficient retrofit.
- Eliminate the winch and tagline to improve productivity using transporters for TV/Sonar work.