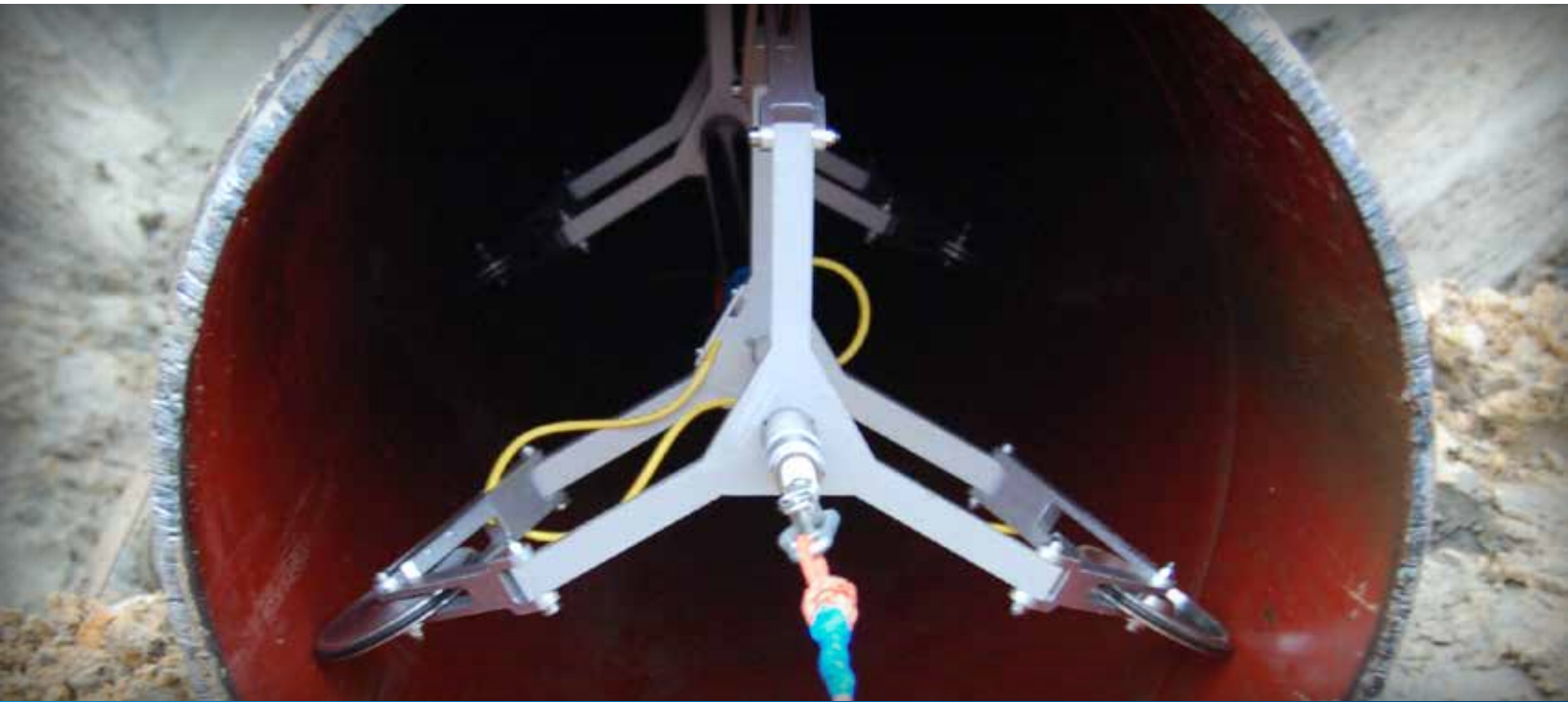


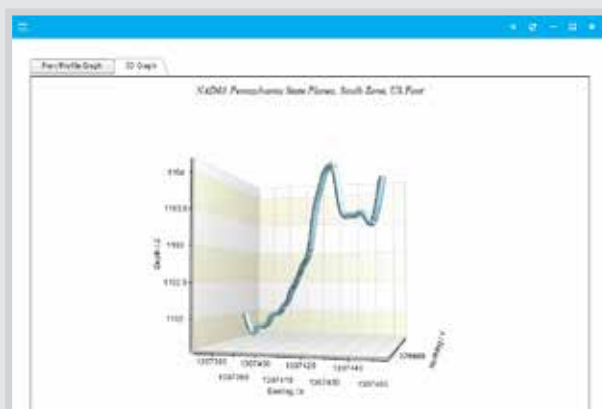
# AMP

## PIPELINE MAPPING SYSTEM



CUES AMP, the world's most versatile and unique autonomous multi-purpose pipeline mapping system, delivers exact 3D positional data. The gyroscopic based pipeline mapping system is designed for rapid and accurate XYZ location of your wastewater system.

The Accurate Mapping Probe (AMP) provides precise and efficient 3D location of any underground pipeline asset quickly and easily, including wastewater, utilities and directional drilled lines. AMP's accurate data can be used for as-built drawing verification and defect locating including pipe sags, misaligned joints, horizontal and vertical design problems and hydraulic modeling. The system includes interchangeable wheel sets allowing AMP a wide operational range from 3" (76 mm) in diameter to 58" (1473 mm) in any and all pipe materials including VCP, iron, plastic and concrete.



• AMPVUE™ 3D Graph

• AMPVUE™ Data Transfer Download Screen

CUES AMP is the world's most versatile and unique autonomous multi-purpose pipeline mapping system that delivers exact 3D positional data.

AMPVUE, a cloud based free service for all users of CUES AMP is available to manage all the data produced by the CUES AMP. This tool provides industry standard enterprise GIS outputs, multiple CAD formats and standard detailed reports.

- Provided as a free service to all users of the CUES AMP.
- AMP data is immediately converted and available for download in industry-standard GIS & CAD formats.
- Cloud technology, accessible via a web browser.
- Manages all data produced by the CUES AMP.
- Permits non-technical users to easily access data.
- Standard reporting modules, allowing easy documentation of projects performed with the CUES AMP.
- Easy data integration (import/export) with any existing enterprise GIS.

AMPVUE Professional is available for any size operation requiring a GIS (Geographic Information System). AMPVUE Professional provides a cost effective web-based GIS platform at a competitive cost and includes all of the functionality in AMPVUE, plus:

- All-in-one information repository, includes modules for Document and Photo Libraries.
- Easy to use web-based GIS display (can integrate data from any other location/mapping technology).
- Allows for seamless integration of legacy information (e.g. old CAD maps).
- Allows for creation/use of custom, industry-specific queries and reports.
- Municipalities without a GIS can be up and running with minimal cost.
- Automated bend radius analysis modules utilizing CUES AMP results.
- Custom reporting modules can be created for various industry-specific Key Performance Indicators (KPI).



- Use AMP for precise location of your underground pipeline assets for proactive sewer repair and replacement.
- Identify the critical problems, such as inclination, sags, bends, etc. in your wastewater system.
- The CUES AMP data can be used with your centralized system of record keeping and be accessible to all decision makers to assure proper defensible spending.
- Identify short and long term concerns to be considered in future CIP and O&M budgets.
- Integration of exact positional location with CCTV-identified anomalies and CUES asset-based GraniteNet decision support software allowing for accurate and cost-effective spot repairs.
- Use data for as-built drawings and confirm that installations meet location specifications.
- Project specific custom carriers available upon request.

